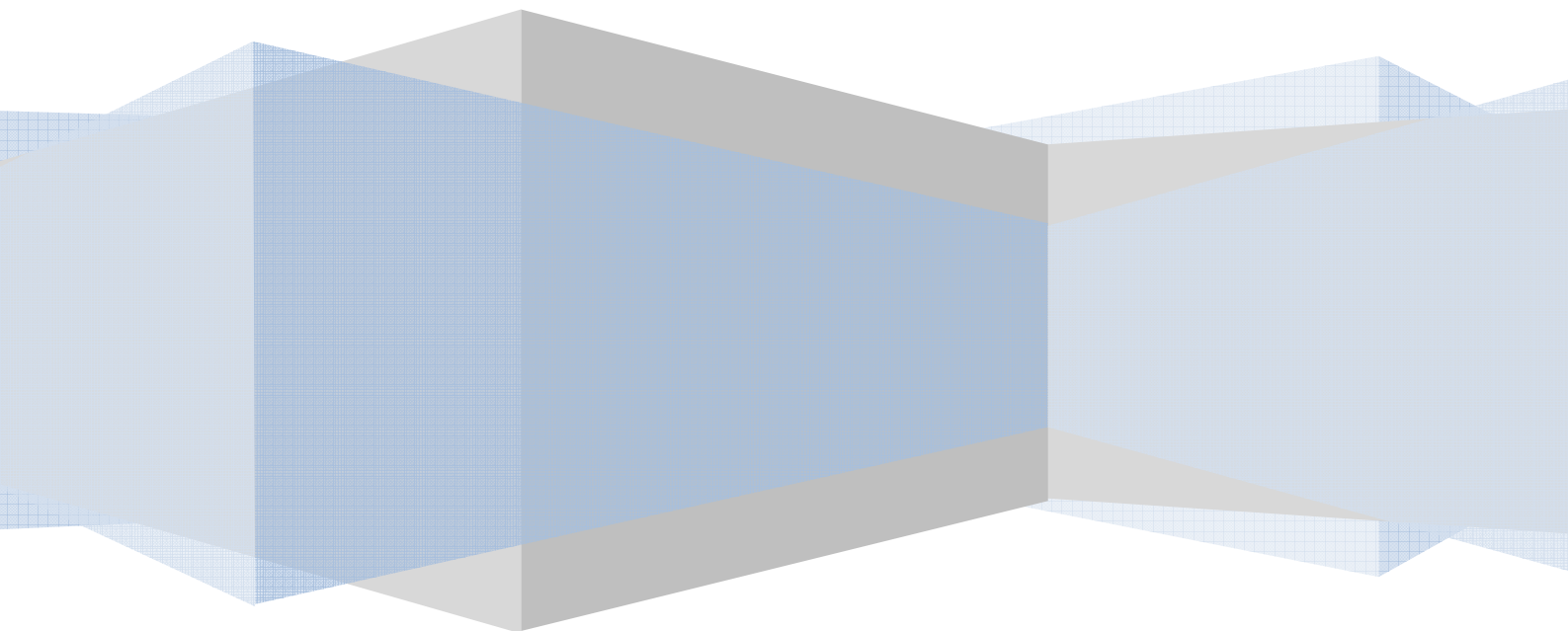


Rev 1.0

Class Demo Manager

User Manual

Naoyuki Aoi (Japan Overseas Cooperation Volunteer)



Contents

1. Overview	3
1-1. Specification Requirement	3
1-2. How does this application work	3
2. Installation	5
2-1. Turn Windows IIS feature on	6
2-2. Set Network configuration.....	8
2-3. Install Class Demo Manager	11
2-3-1. Install Class Demo Manager	11
2-3-2. Class Demo Manager Setting.....	15
2-4. Set Task Scheduler	16
2-5. Add Windows Firewall rule.....	25
3. Class Demo Manager Function	31
3-1. Manager mode	31
3-1-1. Start manager mode.....	31
3-1-2. Setting information.....	33
3-2. Client mode.....	37
3-3. ProcessCheck.exe.....	38

1. Overview

Class Demo Manager application helps you demonstrate how to do in your computer room. This application has 3 ways of demonstration, which are full-screen mode, transparent-screen mode and movable-screen mode. Full-screen mode provide manager's screen to clients' monitor then clients can't use other applications. Transparent-screen mode provide manager's screen to clients' monitor in a small window which is displayed as transparent. Clients can use other applications while demonstrating but manager's screen is always located on top most. Movable-screen mode provide manager's screen to clients' monitor in a movable window. Clients can move and resize the window.

1-1. Specification Requirement

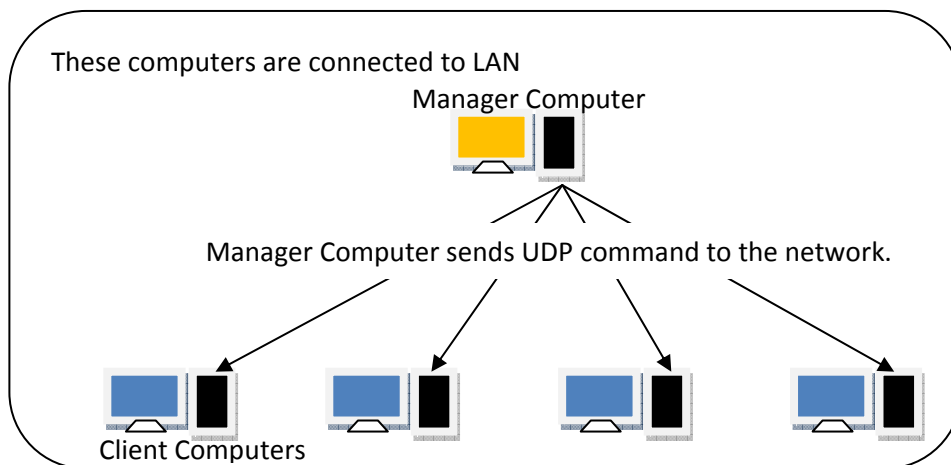
This application requires these items such as below.

OS: Windows 7 or later
Software: Microsoft .NET Framework 4.0 or later
IIS(Internet Information Services) 7.5 or later
Network: LAN environment

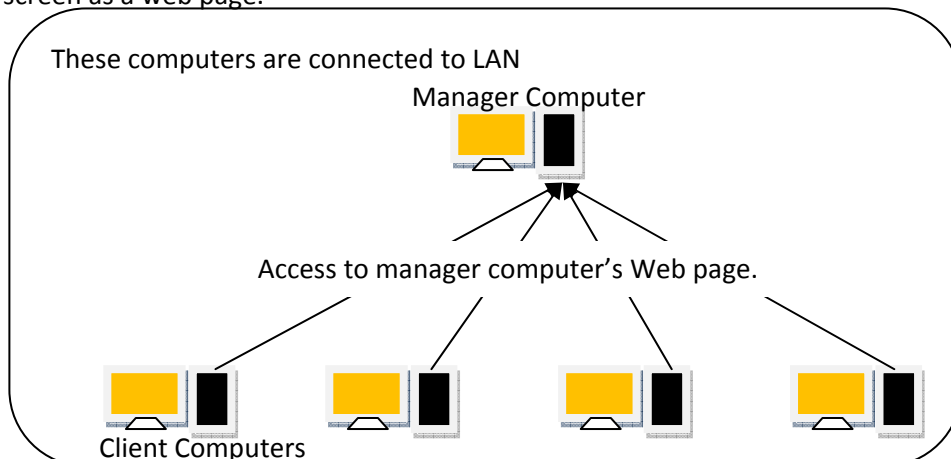
The application can works on thin-clients system such as N-Computing environment.

1-2.How does this application work

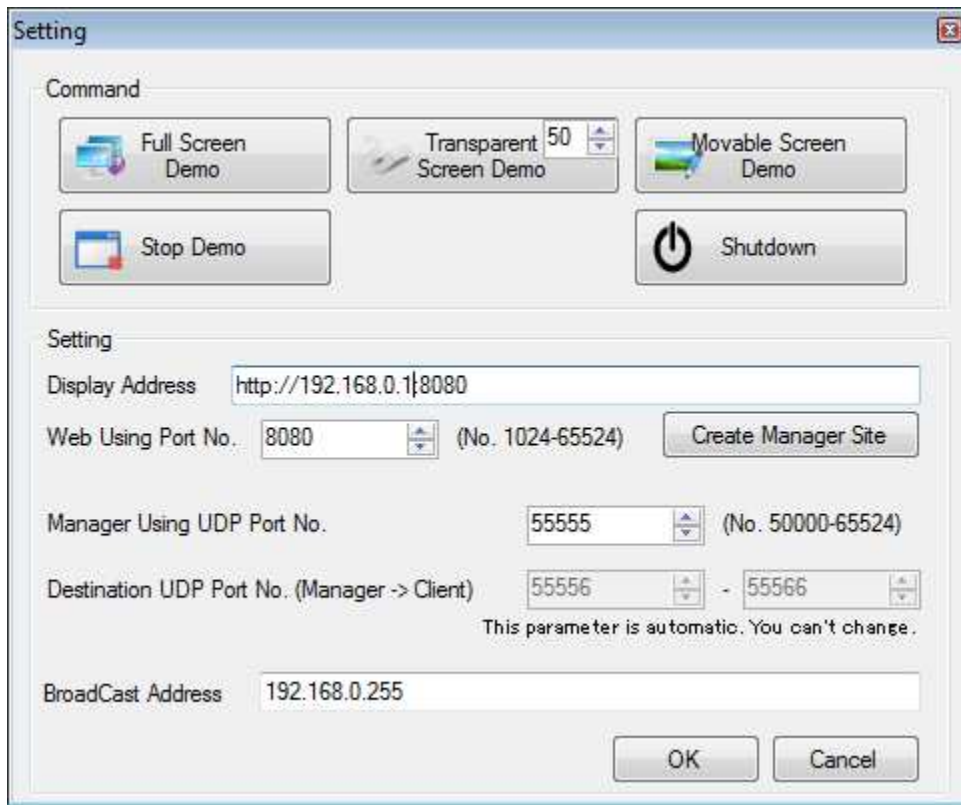
This application is based on network protocol and Manager Computer work as a Web server. First, manager sends command to the network.



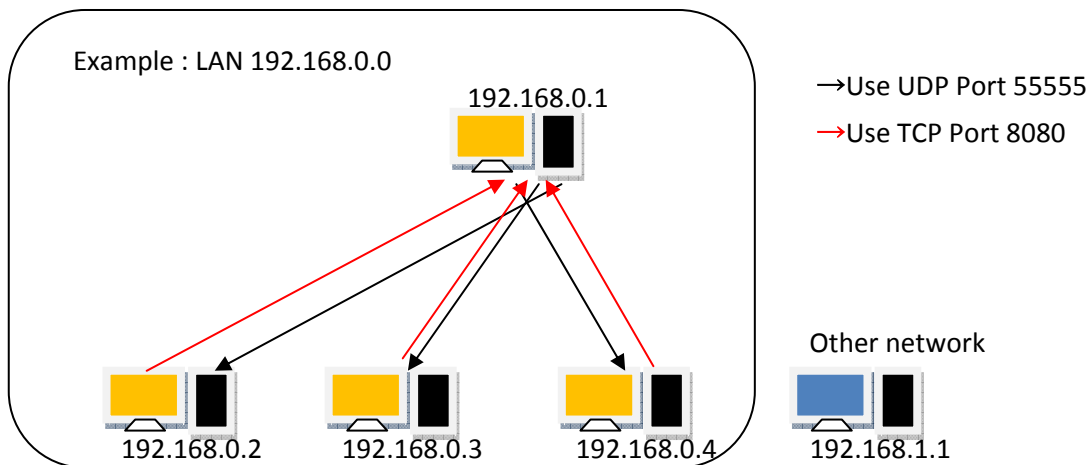
After clients receive command, clients access to manager computer. The application displays manager's screen as a web page.



Example : This is application's setting window.



These settings suit for configuration below.

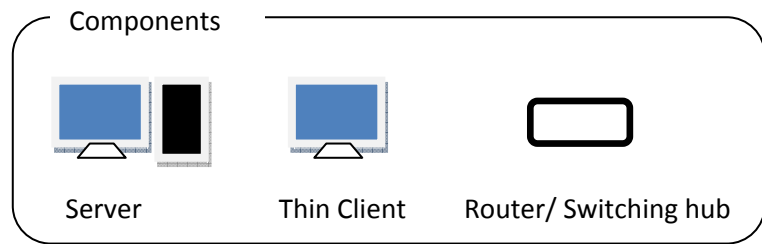
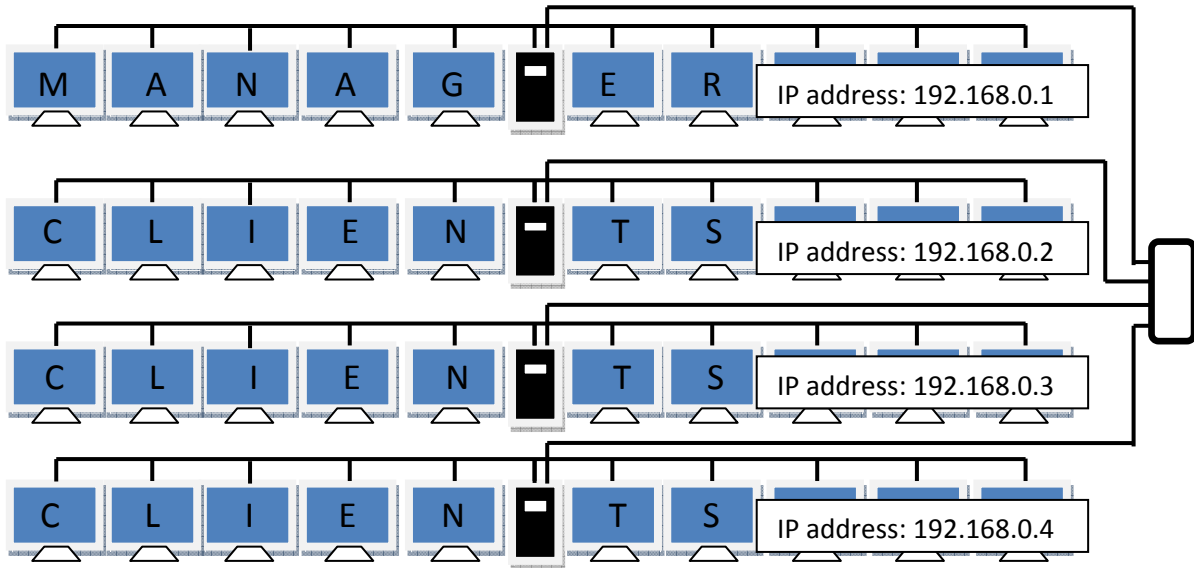


2. Installation

This application needs some features. So follow these steps which are required.

This installation supposes a configuration such as below.

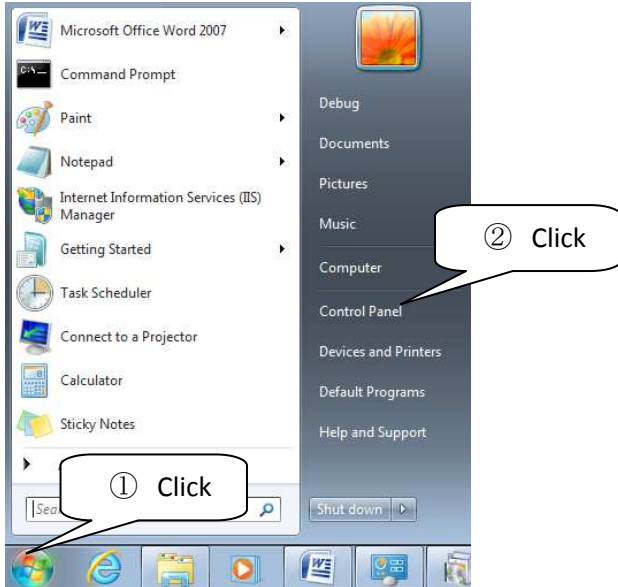
Example configuration(Thin-Clients system which contains 4 servers and 36 clients)



2-1. Turn Windows IIS feature on

This feature is required for manager computer only.

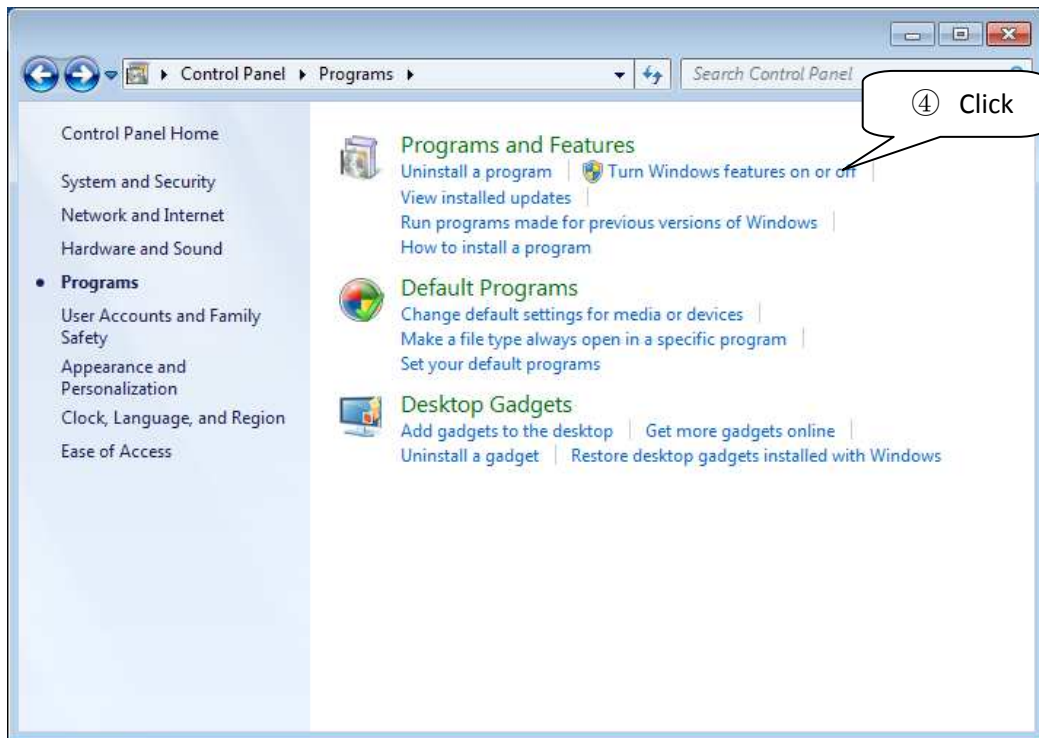
- ① Click [Windows start menu].
- ② Click [Control Panel].



- ③ Click [Program].

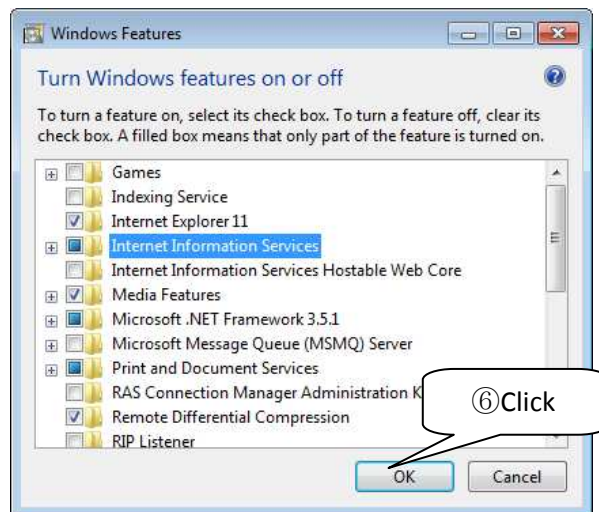
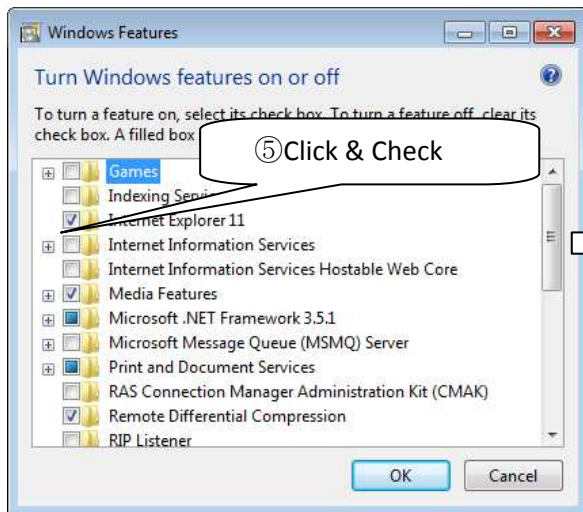


- ④ Click [Turn Windows features on or off].

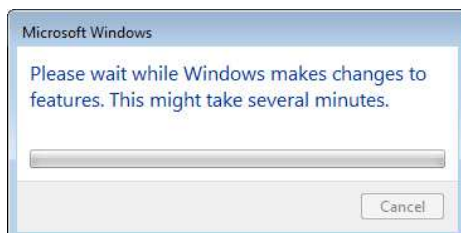


⑤ Click & Check [Internet Information Services].

⑥ Click [OK].



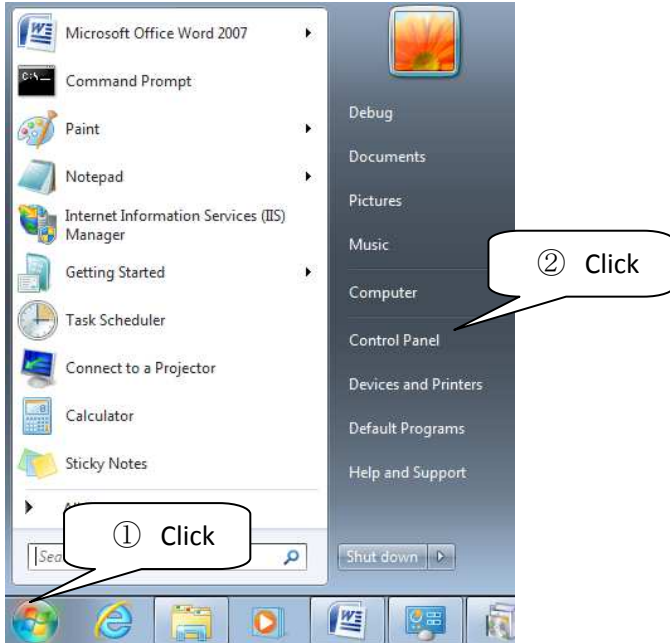
⑦ Wait for several minutes. After the below window disappears, IIS feature is ready. If computer shows restarting message, please restart computer.



2-2. Set Network configuration

This setup is required for manager and all clients' servers.

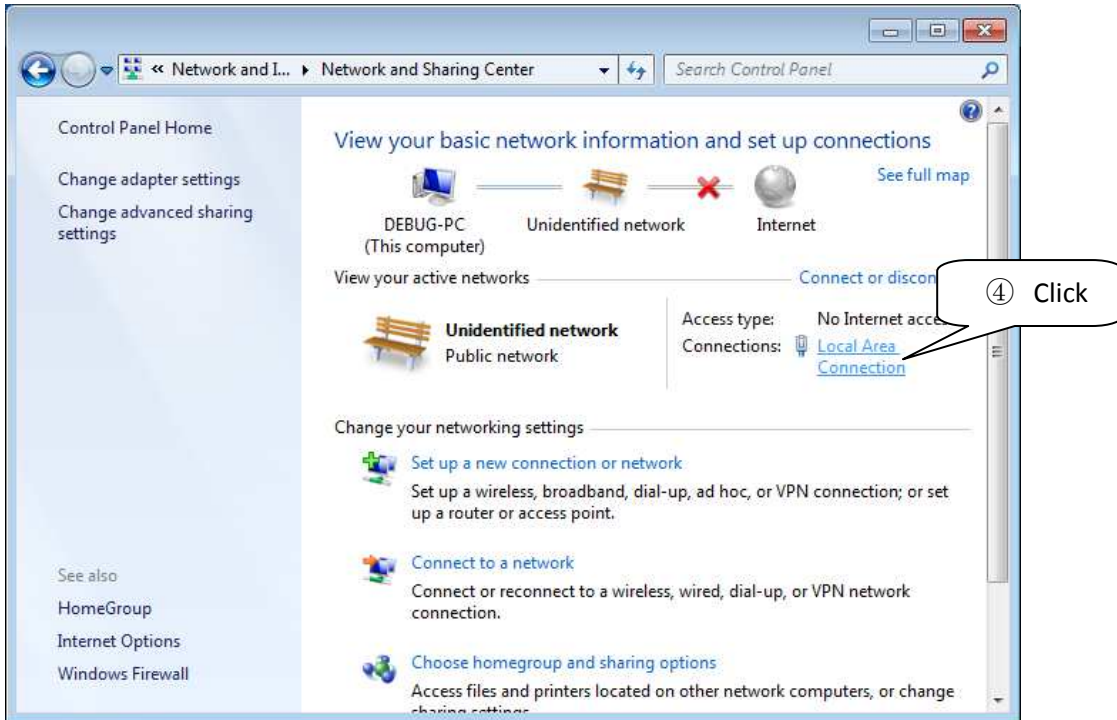
- ① Click [Windows start menu].
- ② Click [Control Panel].



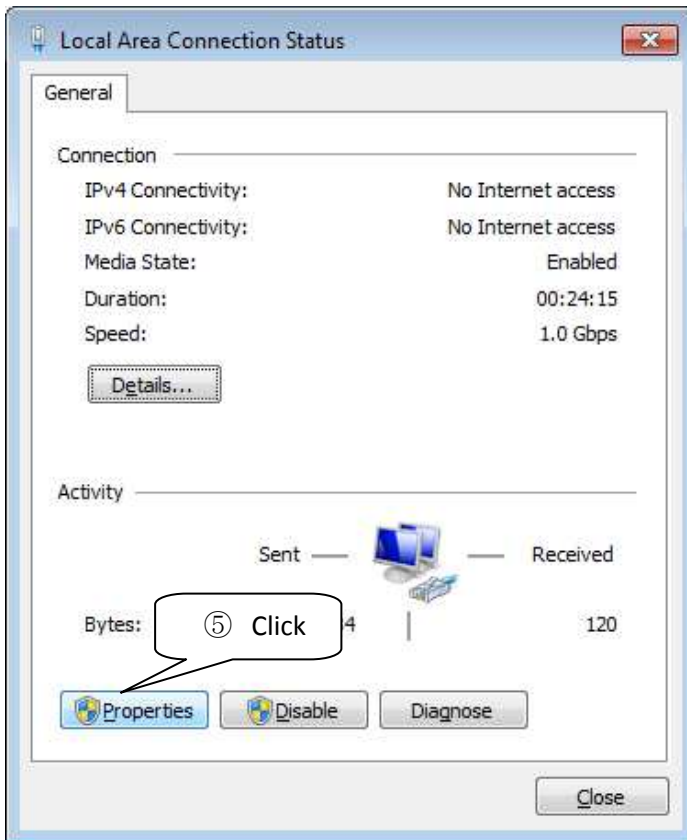
- ③ Click [View network status and tasks].



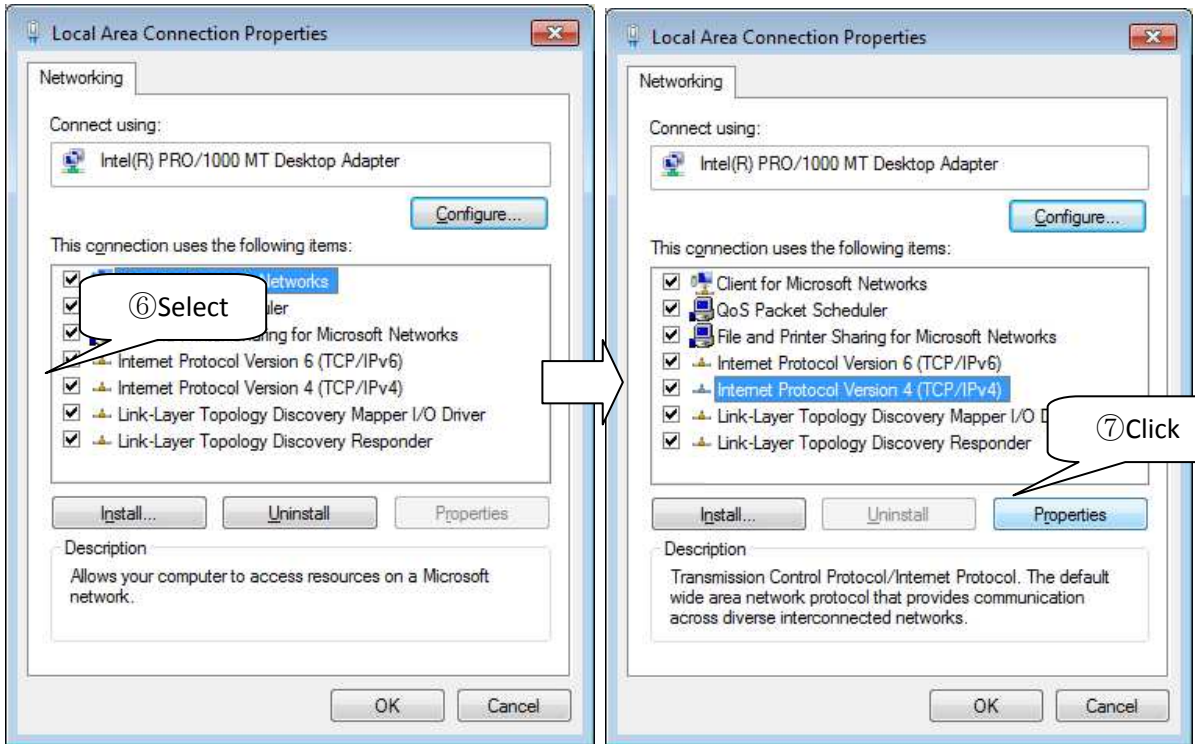
④ Click [Local Area Connection].



⑤ Click [Properties].

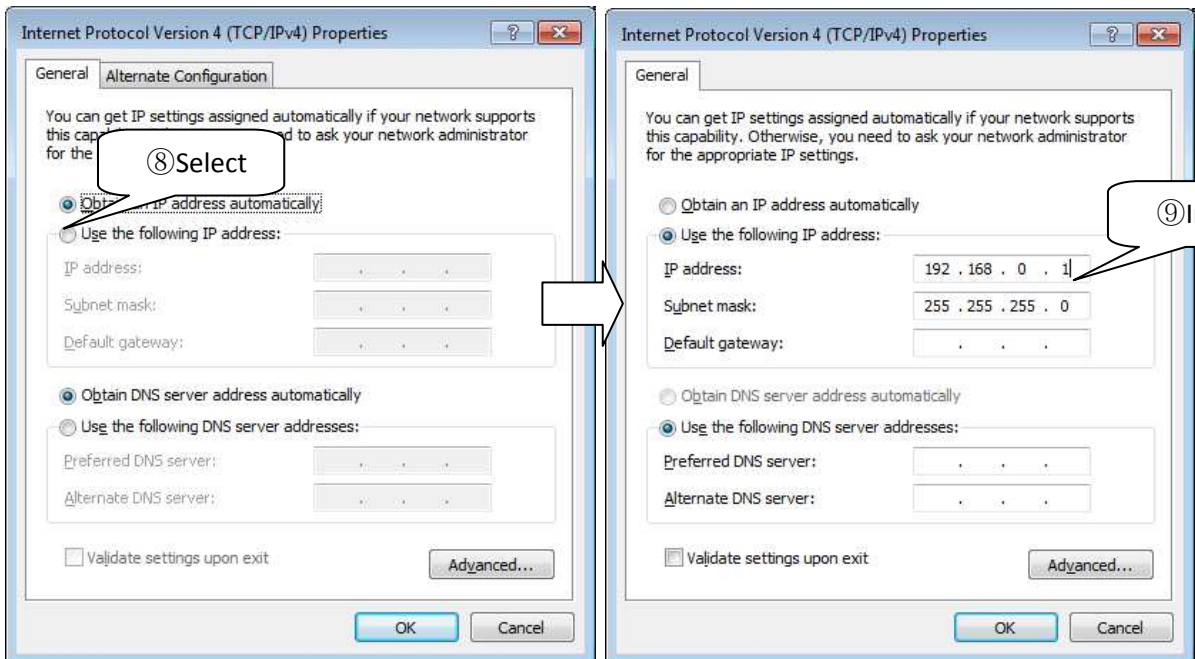


- ⑥ Select [Internet Protocol Version 4 (TCP/IPv4)].
- ⑦ Click [Properties].

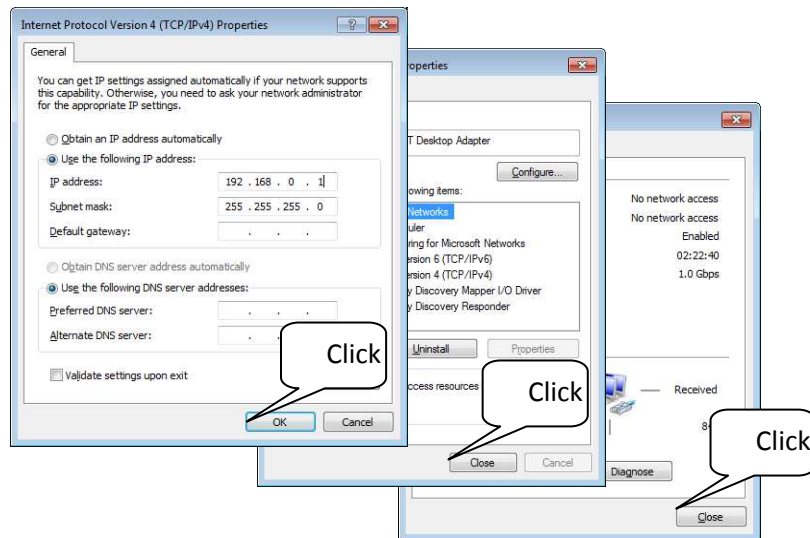


- ⑧ Select [Use the following IP address].
- ⑨ Input your network configuration parameter.

ex. Server for Manager : 192.168.0.1 (Subnet mask : 255.255.255.0)
 Server for Clients: 192.168.0.2 ~ 192.168.0.4 (Subnet mask : 255.255.255.0)



- ⑩ Close all windows.



2-3. Install Class Demo Manager

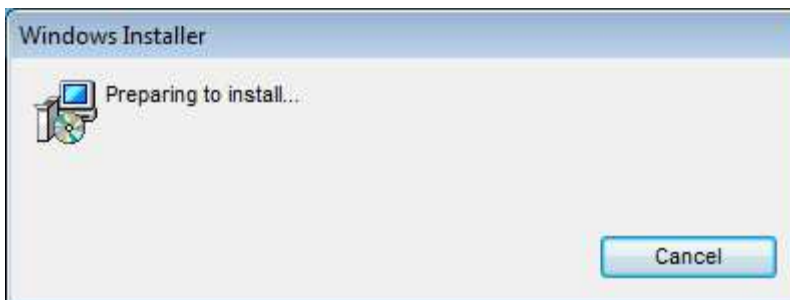
2-3-1. Install Class Demo Manager

This setup is required for manager and all clients' servers.

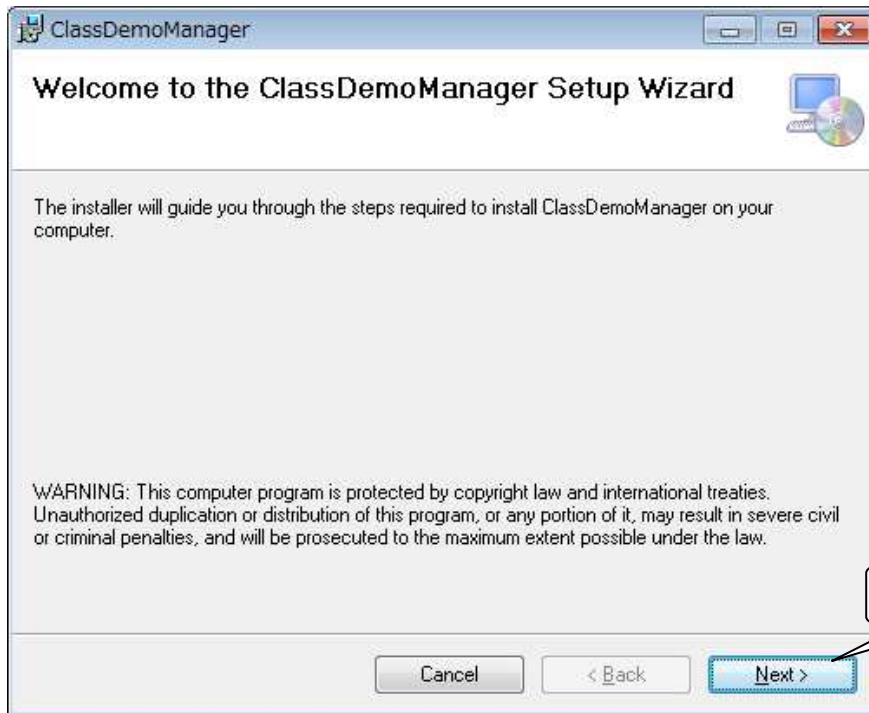
- ① Double click on Setup.msi(Class Demo Manager Installer)



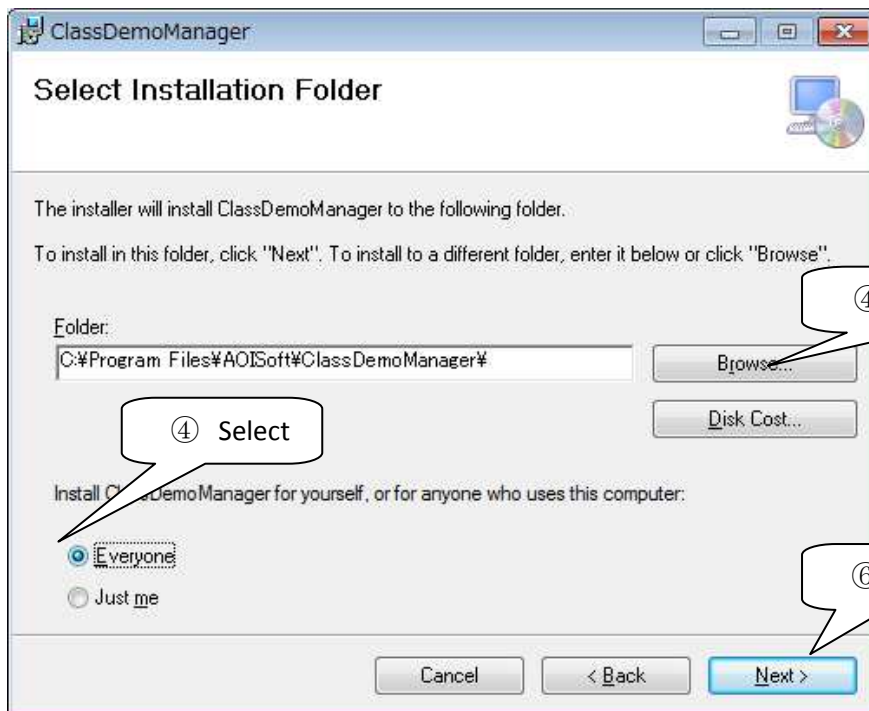
- ② Wait for a moment.



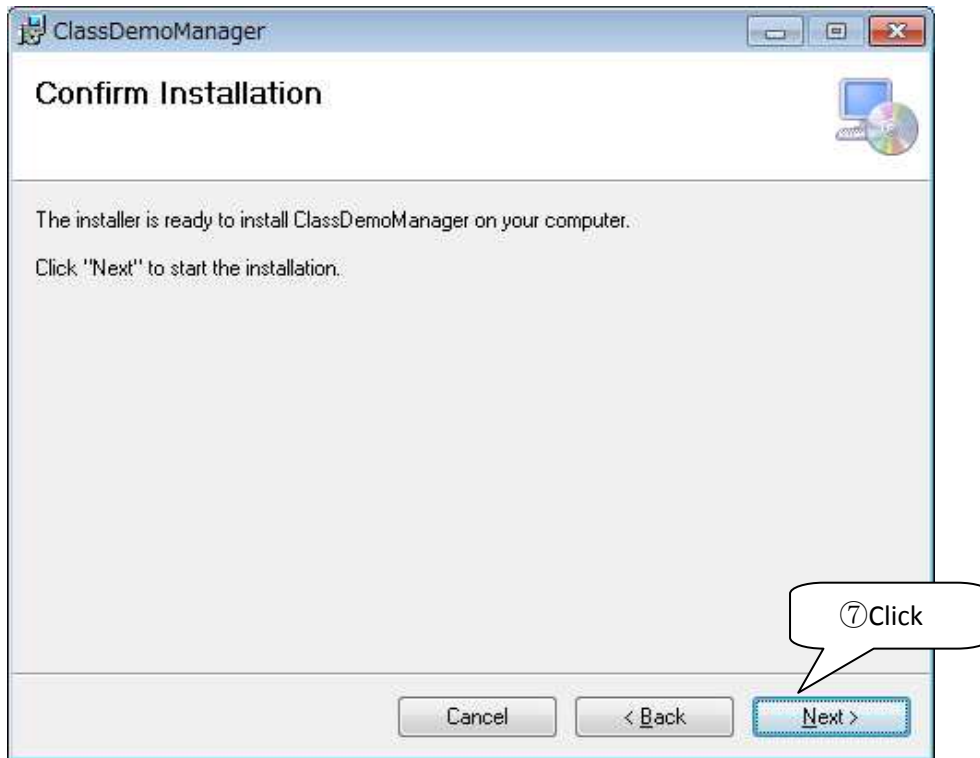
- ③ Click [Next >].



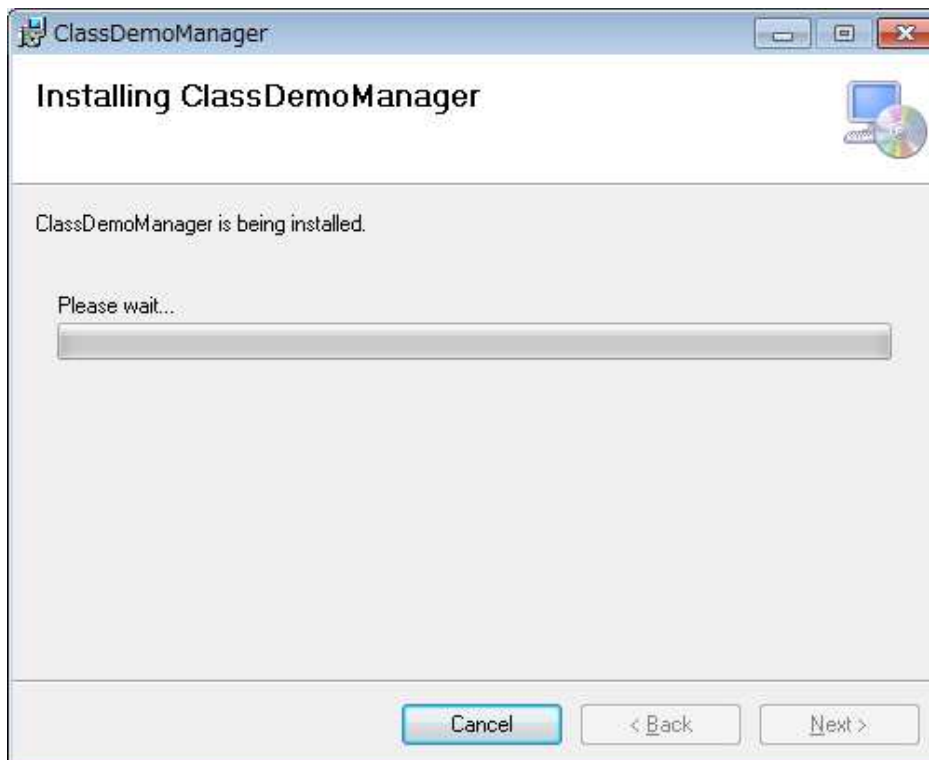
- ④ Select installation folder.
If you don't change folder, skip this step.
- ⑤ Select [Everyone].
- ⑥ Click [Next >].



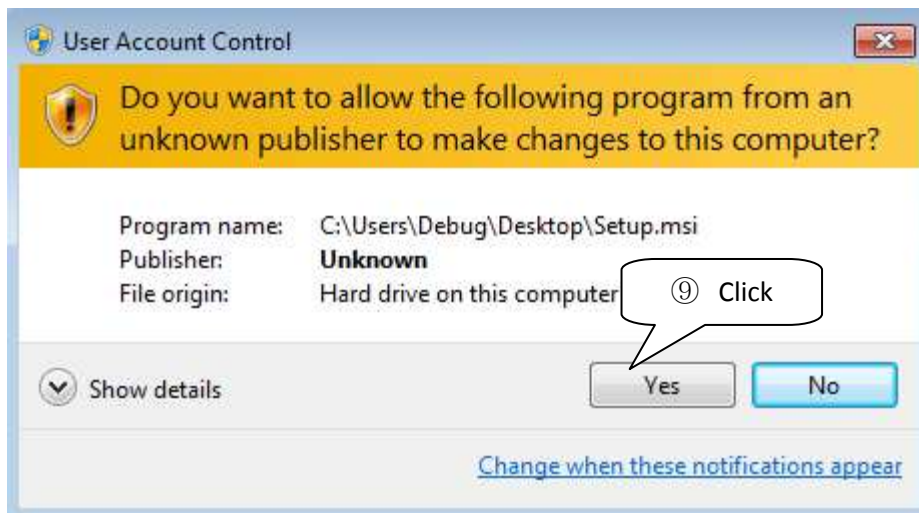
- ⑦ Click [Next >].



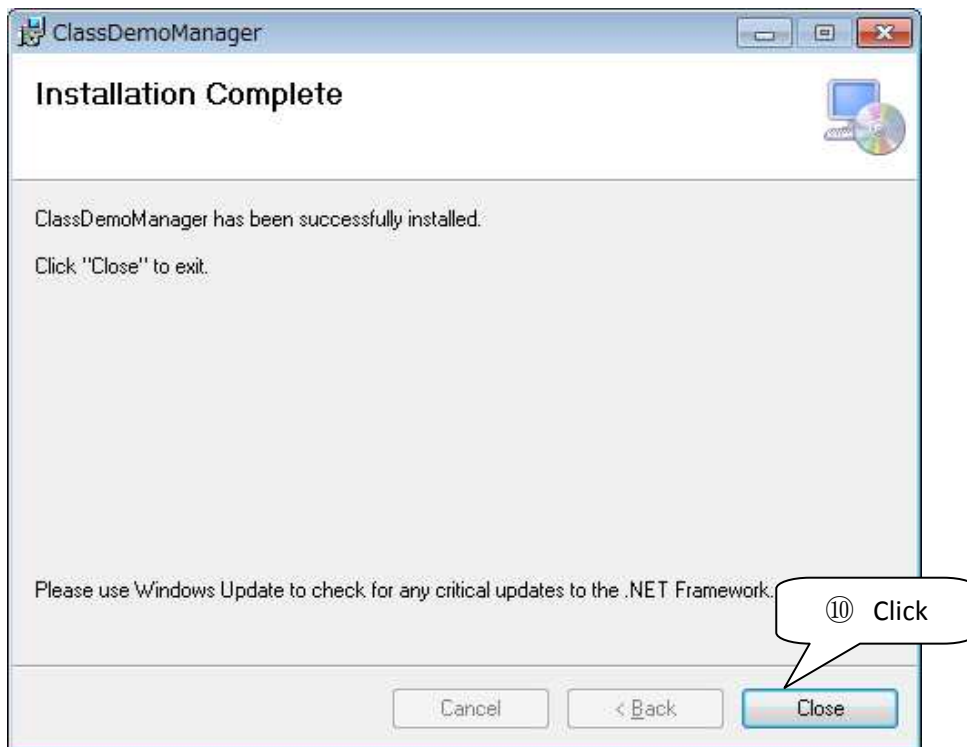
- ⑧ Wait for a moment.



⑨ Click [Yes].



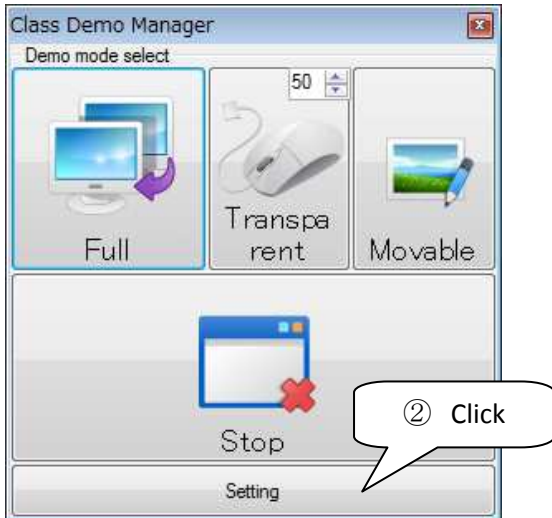
⑩ Click [Close].



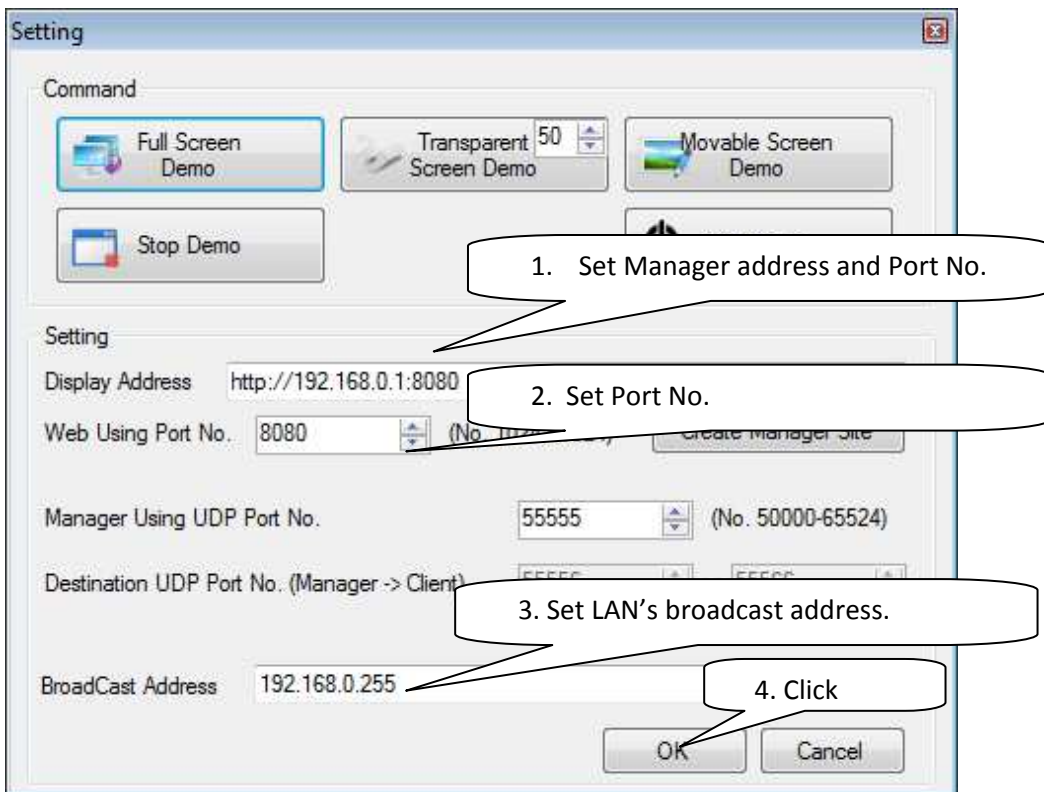
2-3-2. Class Demo Manager Setting

This setup is required for manager and all clients' servers.

- ① Start application as administrator. See 3-1-1. How to start as administrator.
- ② Click [Setting].



- ③ Configure for Setting
 - Display Address
 - Web Using Port No.
 - BroadCast Address

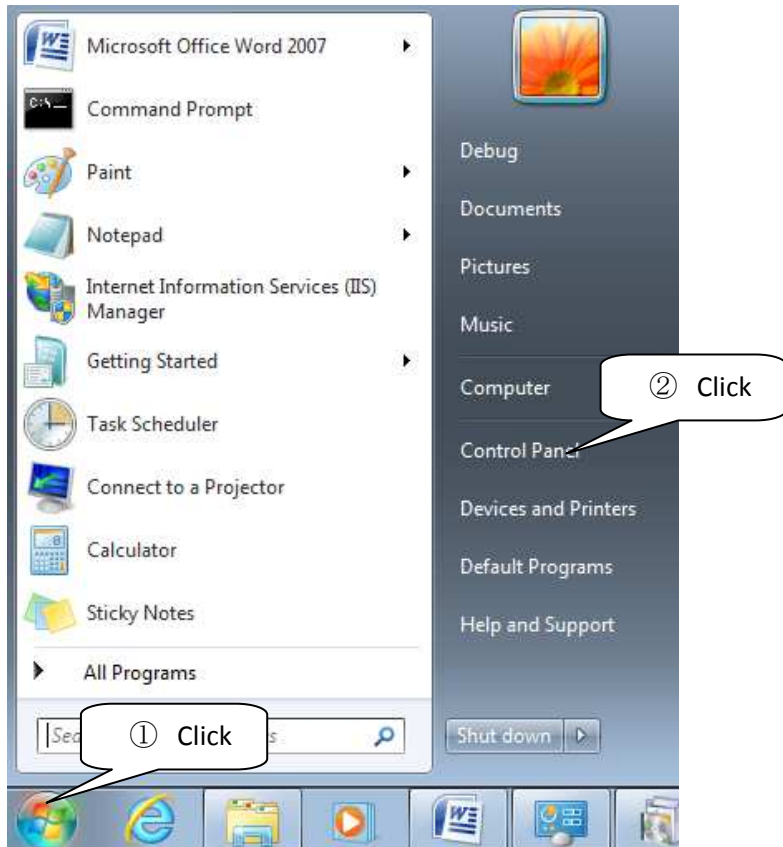


2-4. Set Task Scheduler

This setup is required for all clients' computers. (Thin clients system's manager computer, which is contained clients, is also required.)

When clients log on, the application needs starting automatically. So you create scheduled task.

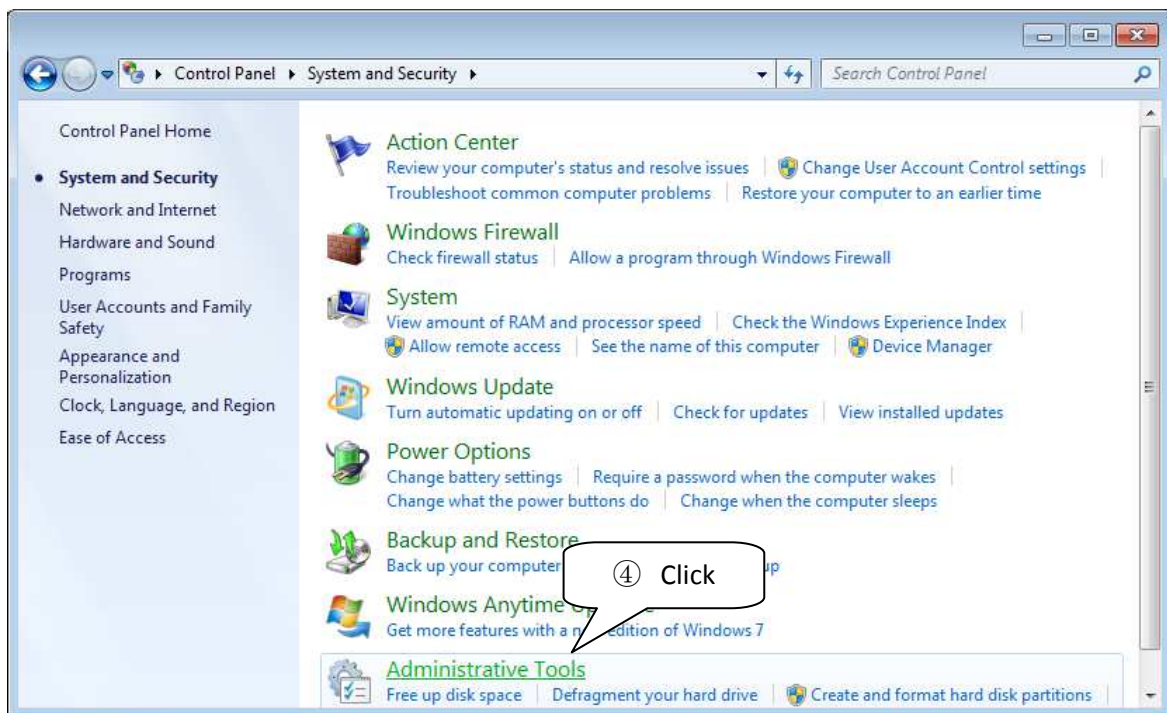
- ① Click [Windows start menu].
- ② Click [Control Panel].



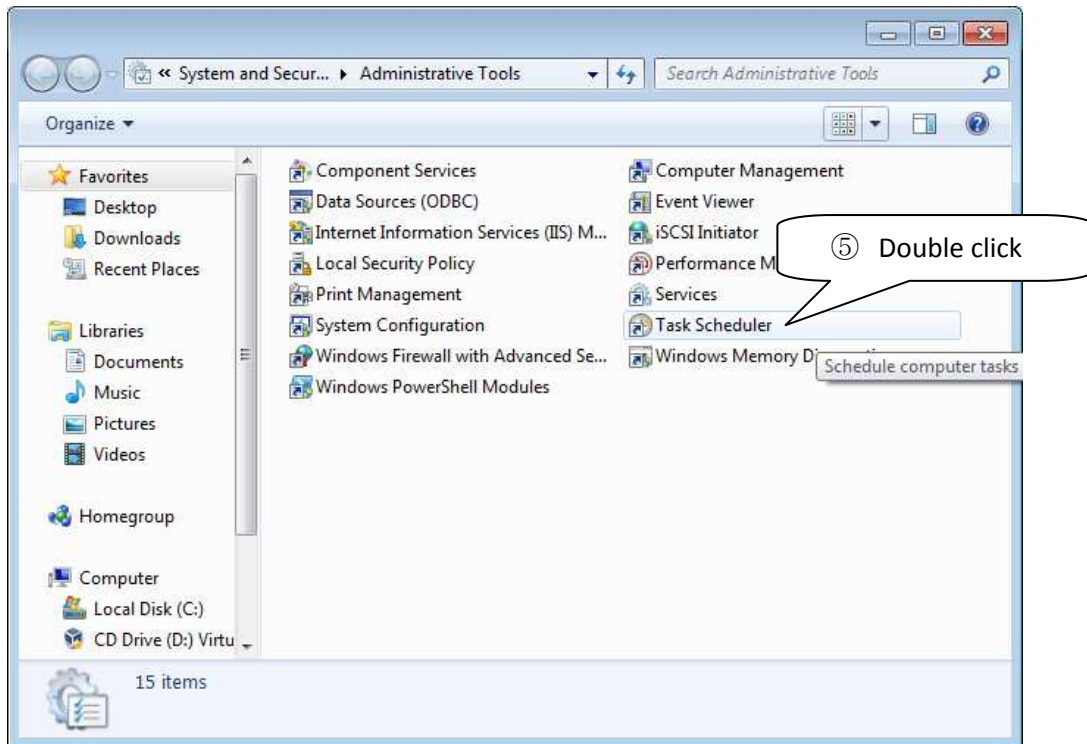
③ Click [System and Security].



④ Click [Administrative Tools].

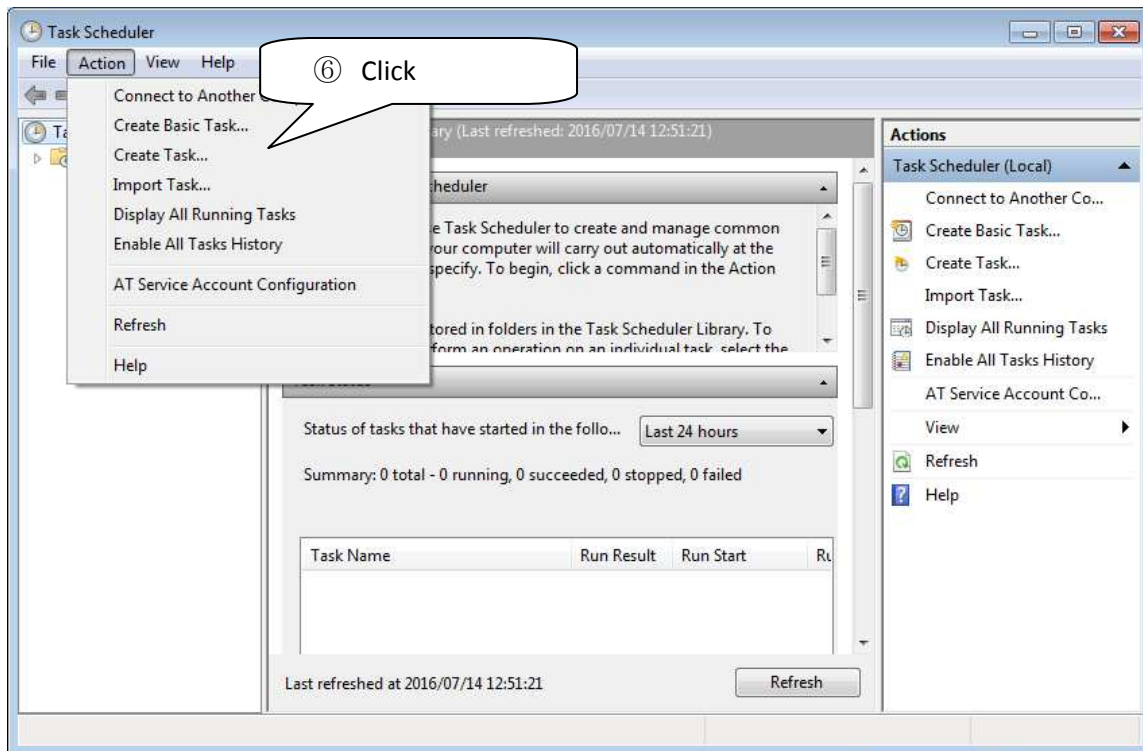


⑤ Double click [Task Scheduler].

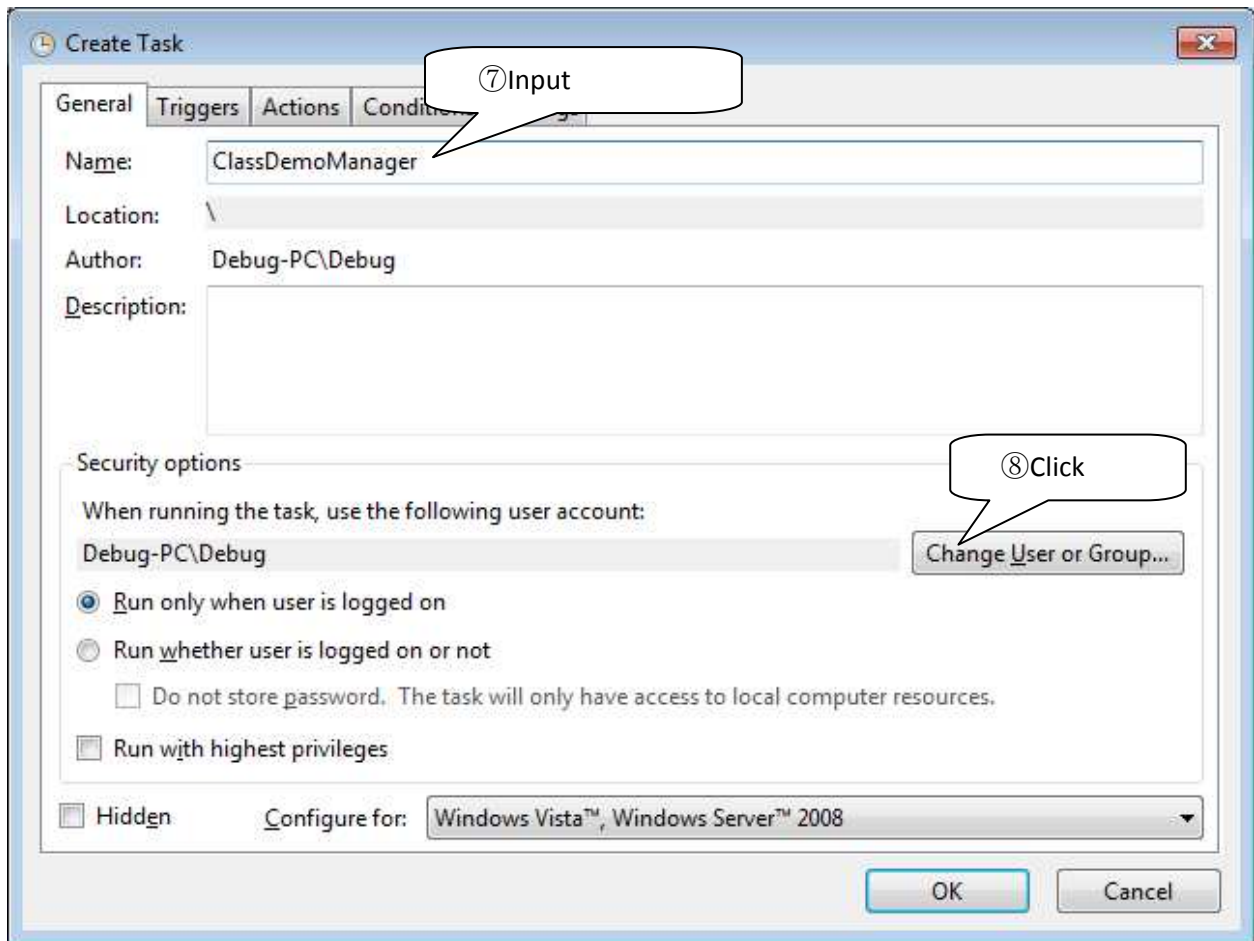


Create Task

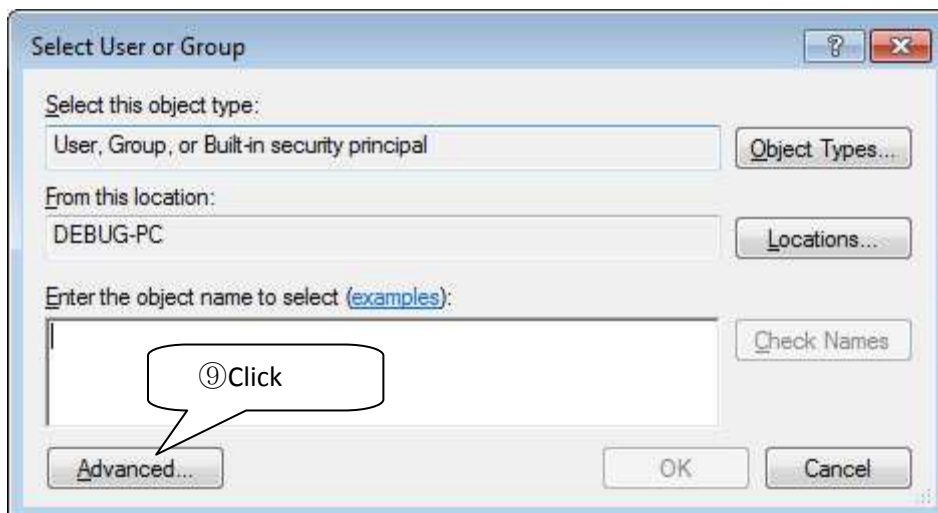
⑥ Select [Action] menu, then Click [Create Task].



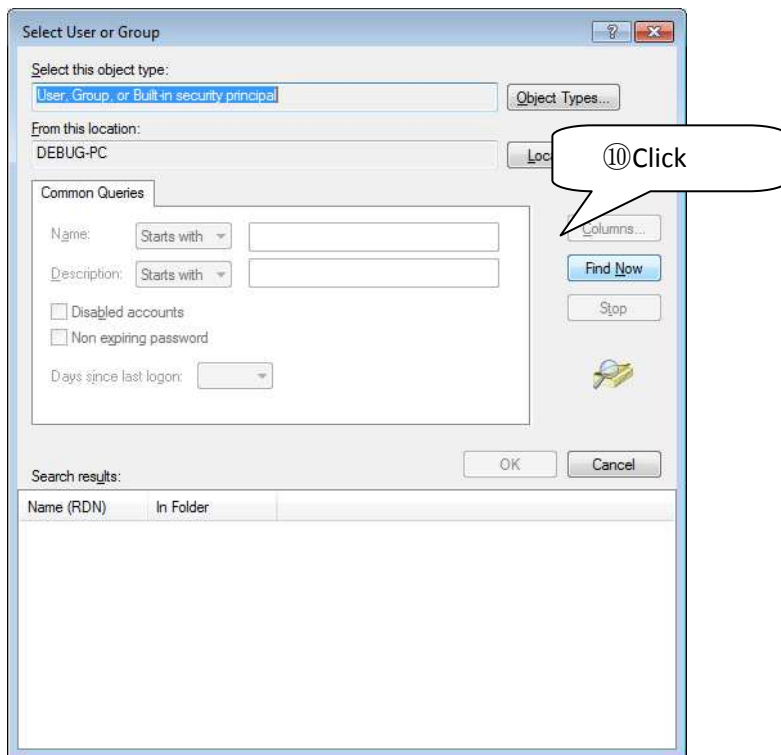
- ⑦ Input task [Name].
- ⑧ Click [Change User or Group].



- ⑨ Click [Advanced].

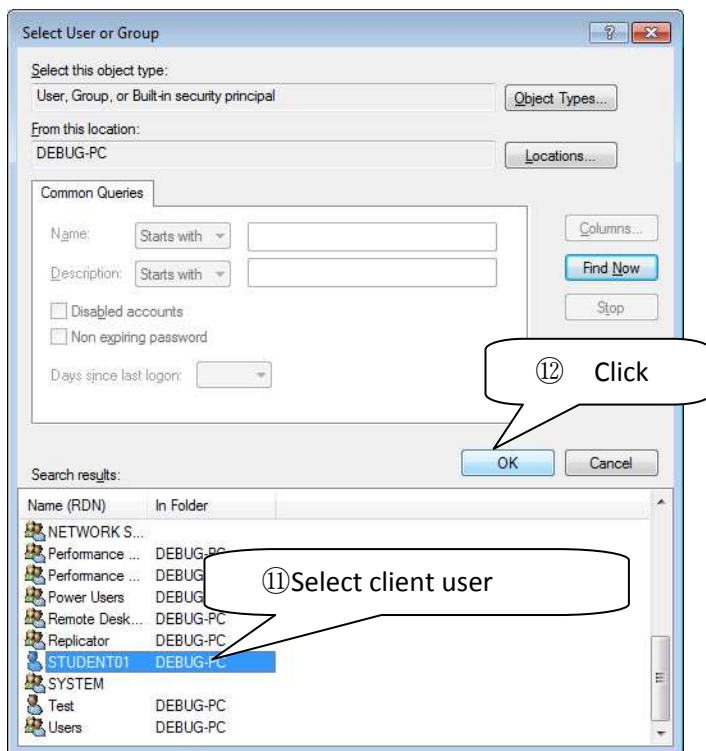


⑩ Click [Find Now].



⑪ Select client user. Example : STUDENT01

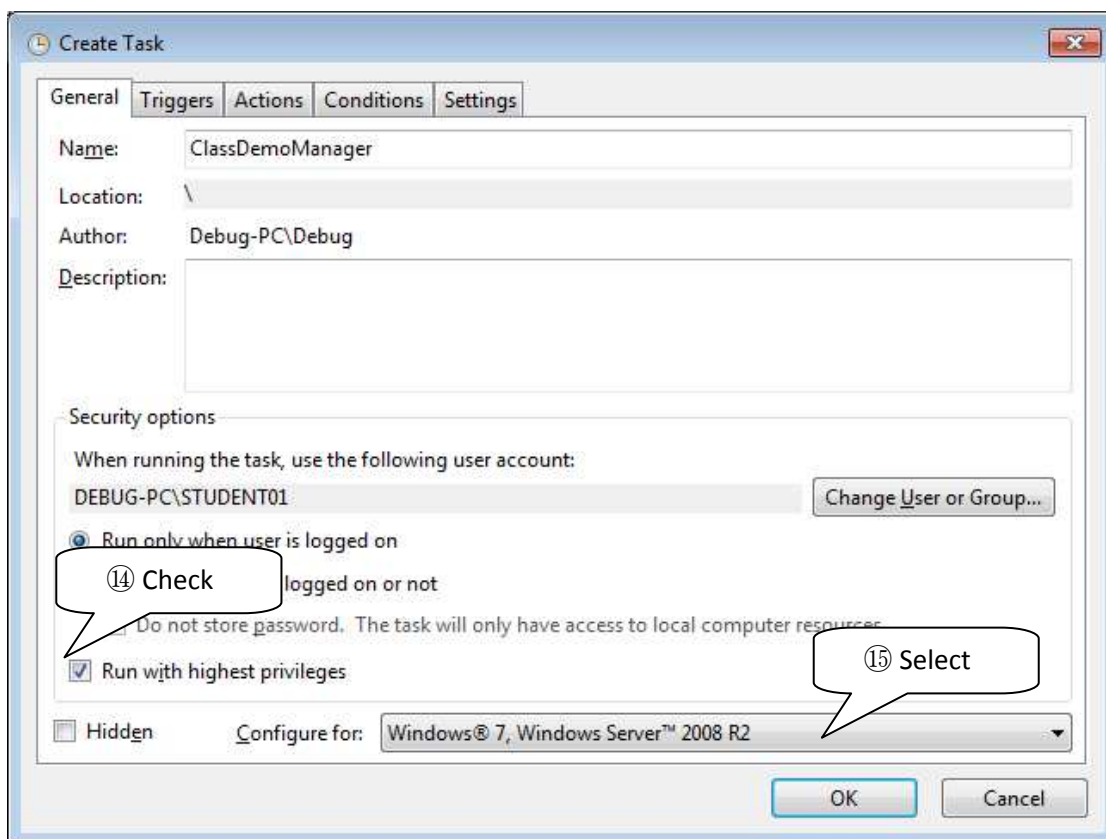
⑫ Click [OK].



- ⑬ Click [OK].

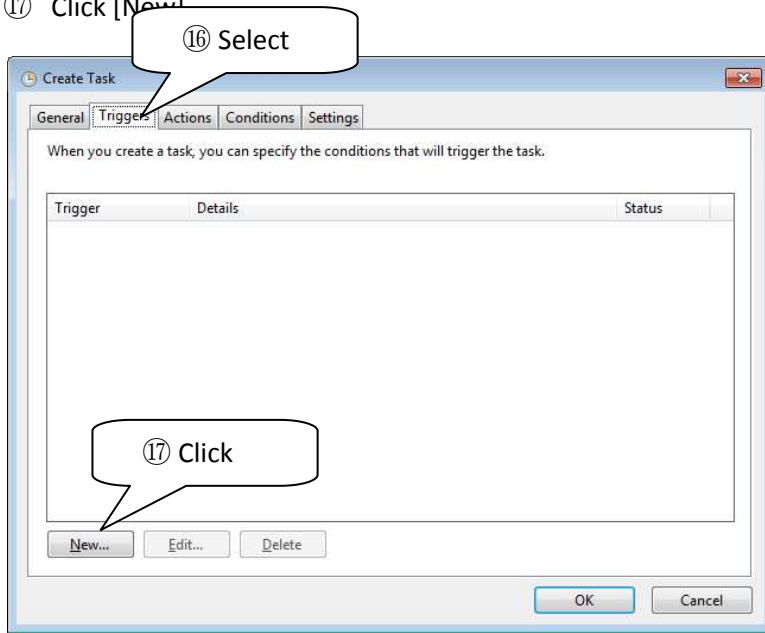


- ⑭ Check [Run with highest privileges].
The application needs some highest privileges.
- ⑮ Select suitable configure of your environment.



⑩ Select [Triggers] Tab.

⑪ Click [New...]

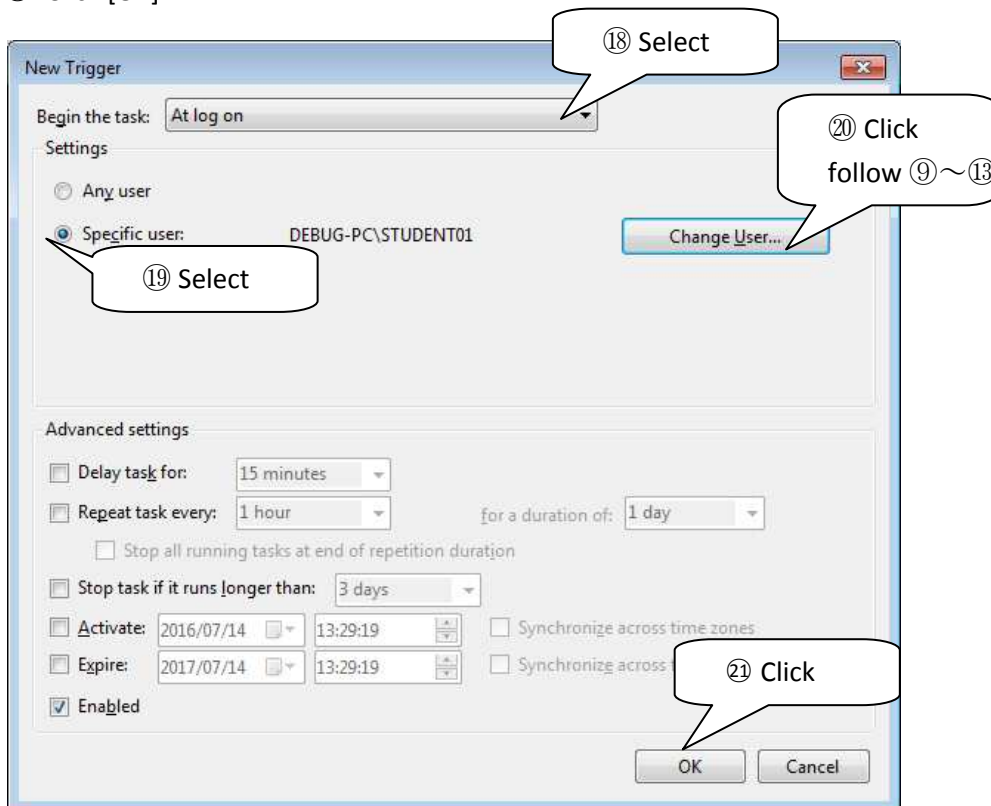


⑫ Begin the task : Select [At log on].

⑬ Select [Specific User].

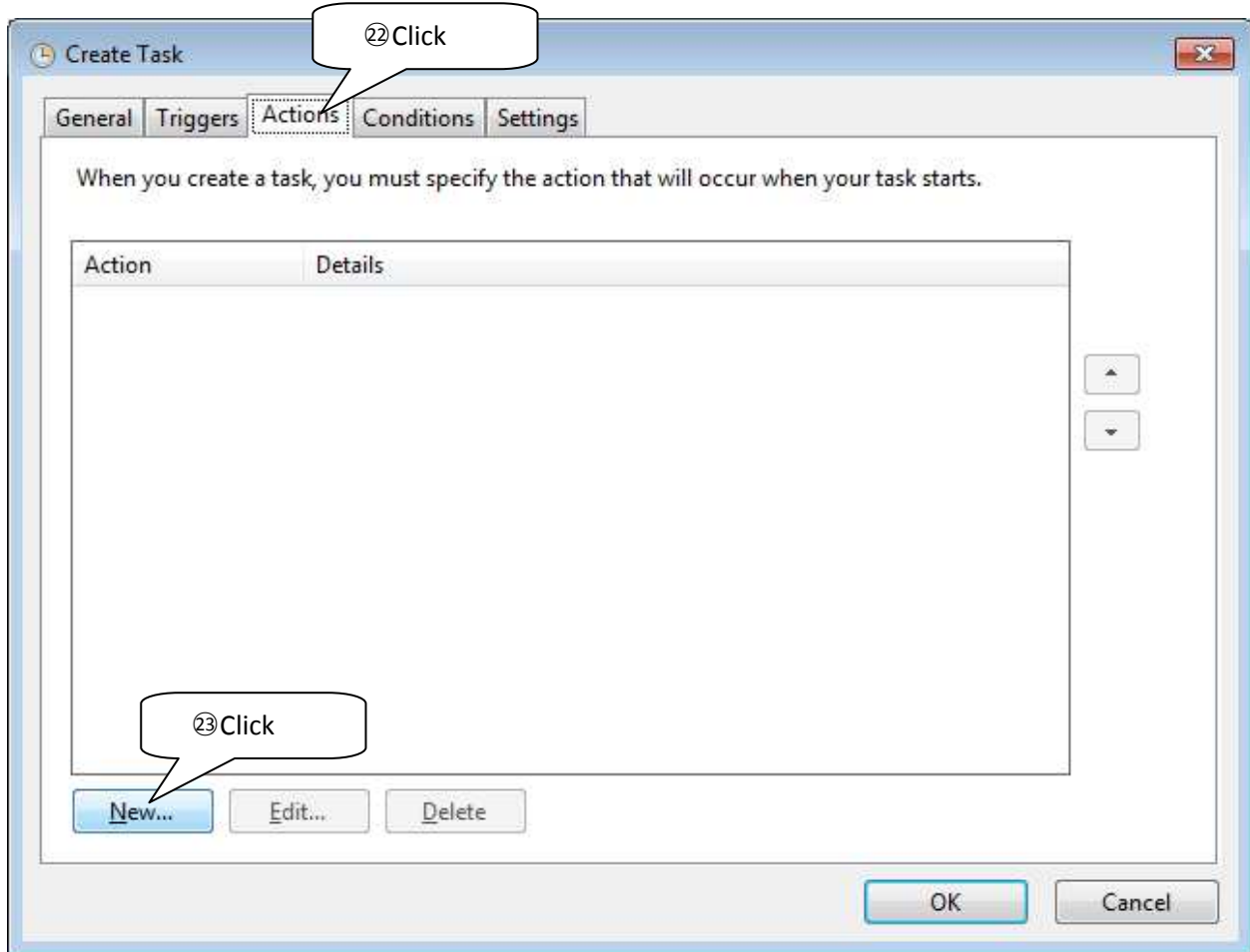
⑭ Click [Change User]. Then follow steps same as ⑨~⑬.

⑮ Click [OK].



② Select [Action] Tab.

③ Click [New].



⑳ Action: Select [Start a program].

㉑ Click [Browse], then select the application.

"C:\Program Files\AOISoft\ClassDemoManager\ClassDemoManager.exe "

㉒ Input [Add arguments] field.

The application switches using UDP port by this value. So you input 1~11 user individually.

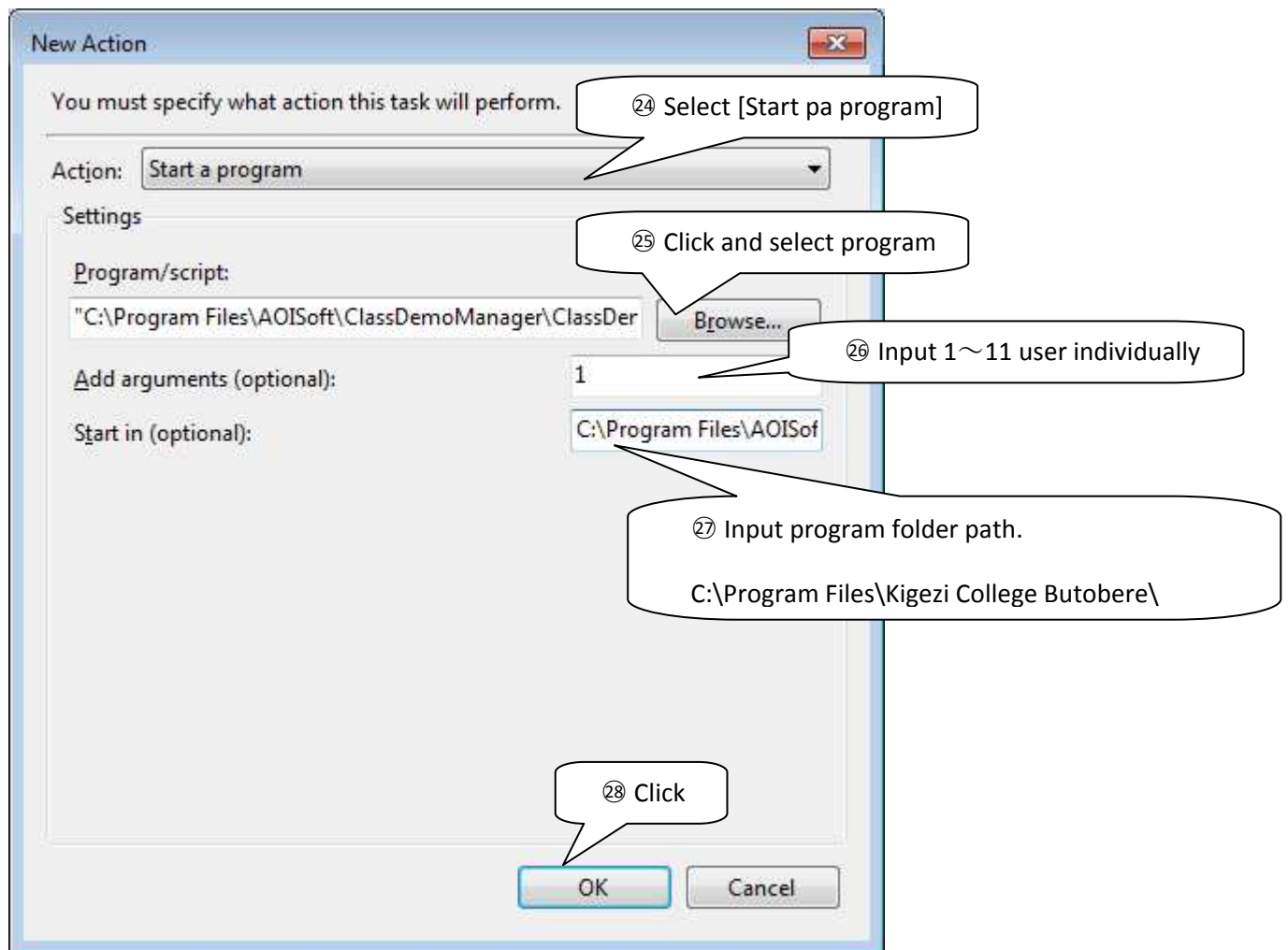
※This field is necessary for thin-client system only.

㉓ Input [Start in].

The application uses this field value for starting related program "ProcessCheck.exe" .

C:\Program Files\AOISoft\ClassDemoManager\

㉔ Click [OK].



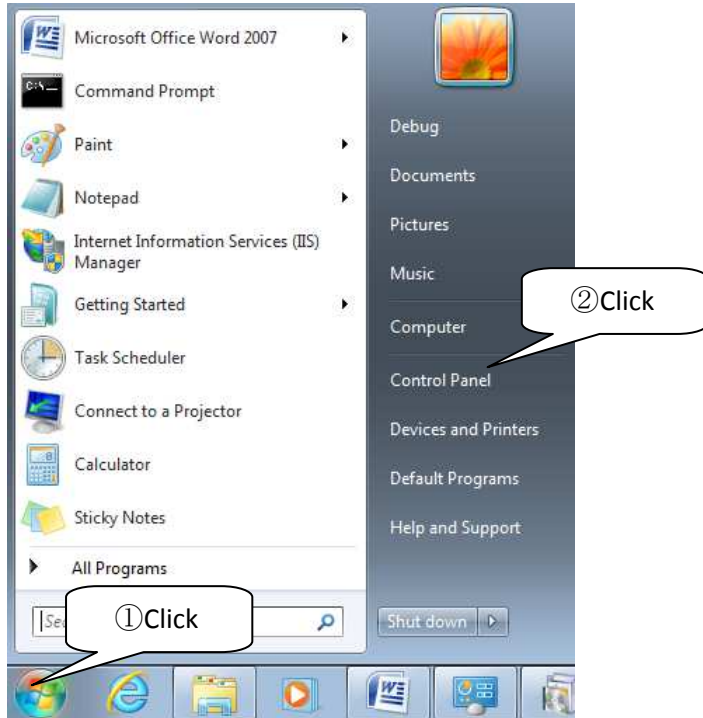
㉕ Repeat step ㉑~㉔ user individually.

2-5. Add Windows Firewall rule

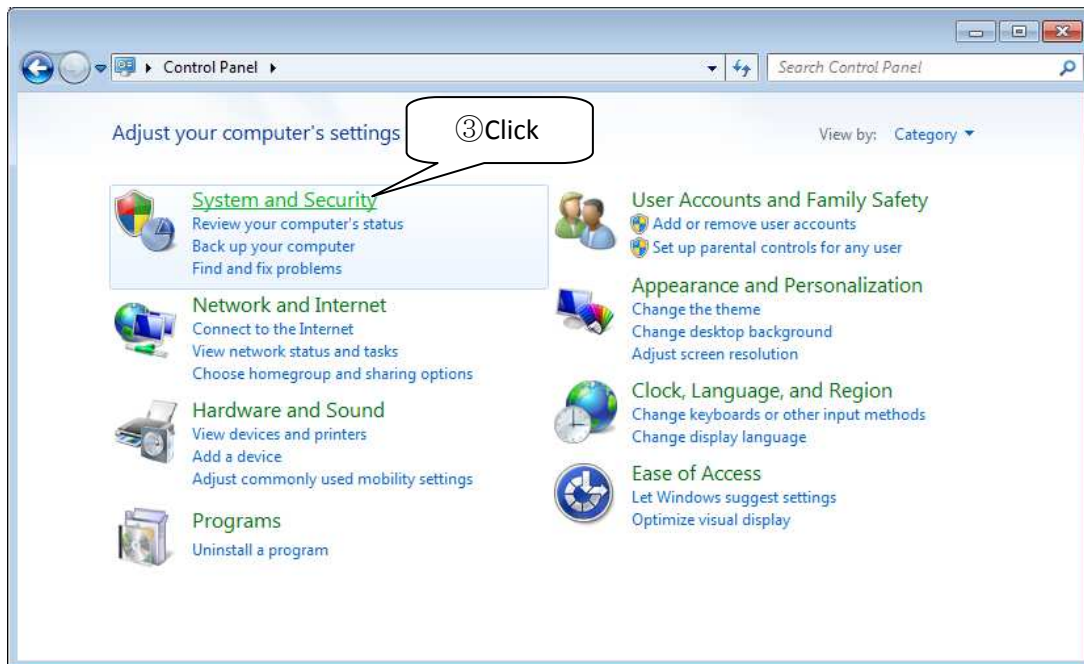
This setup is required for manager only.

①Click [Windows start menu].

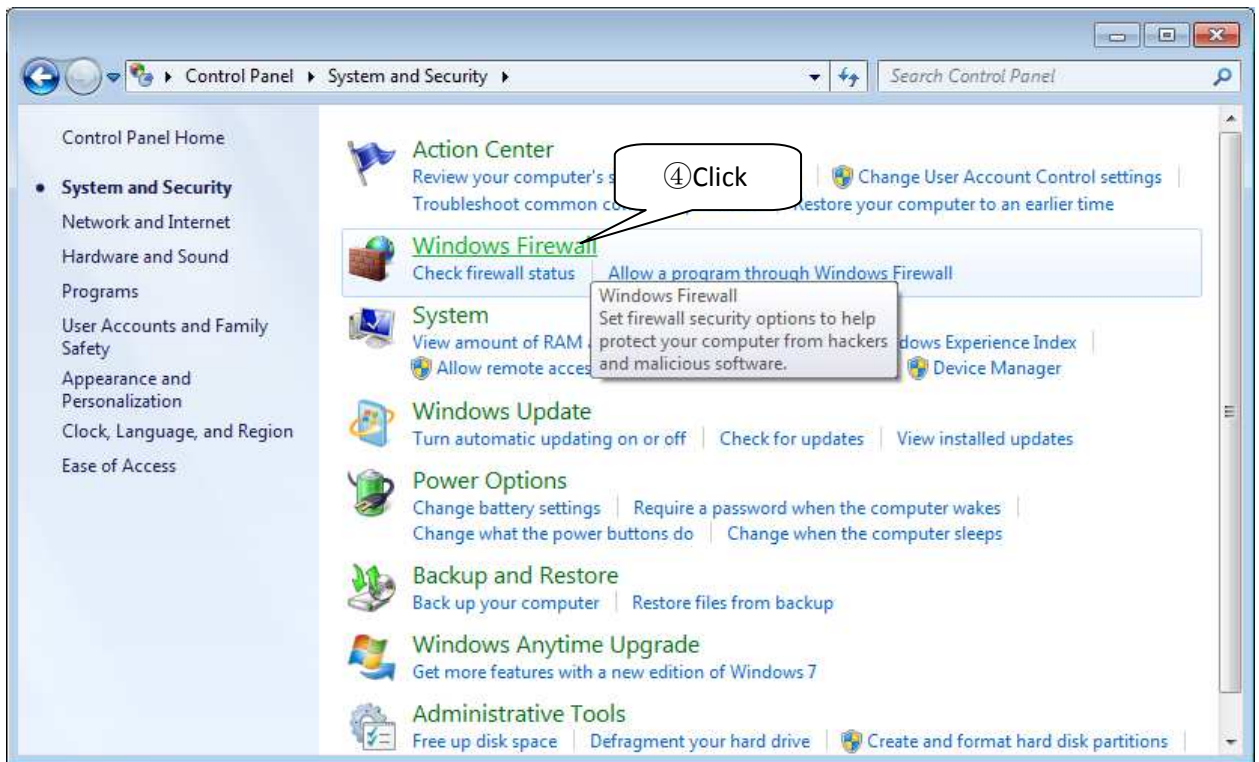
②Click [Control Panel].



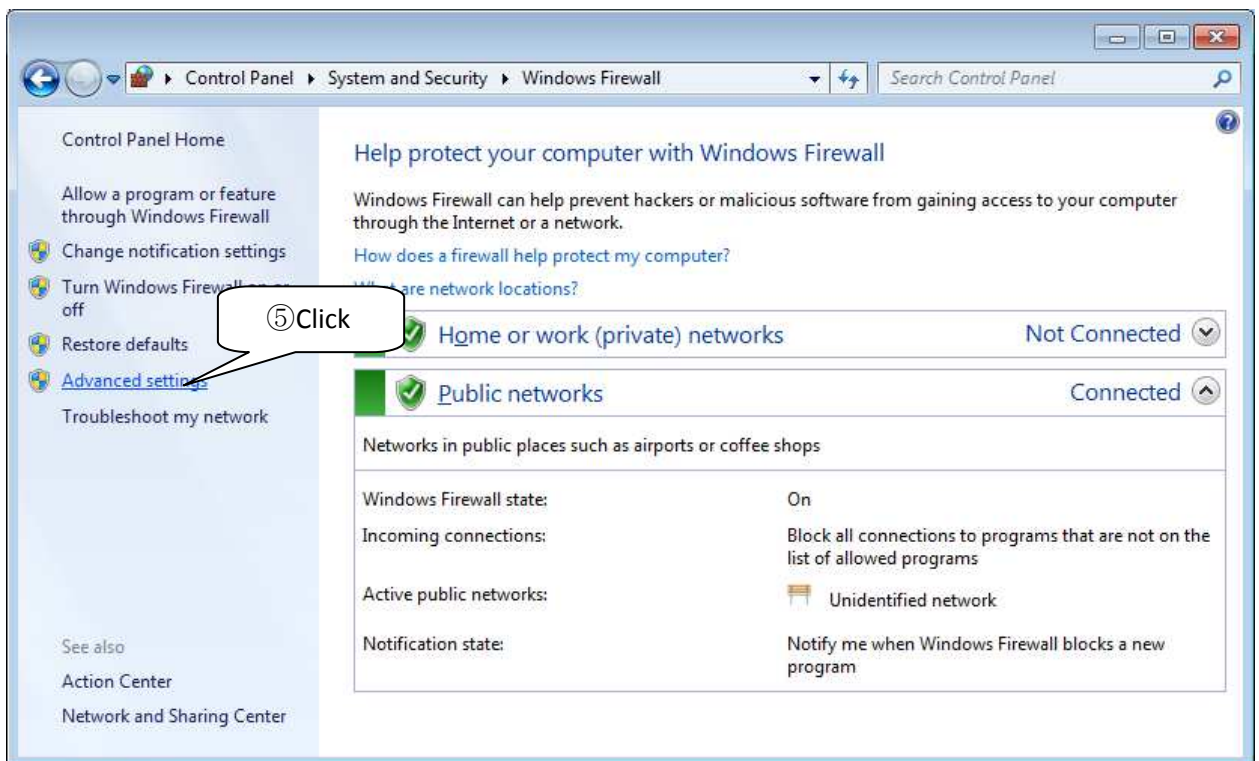
③Click [System and Security].



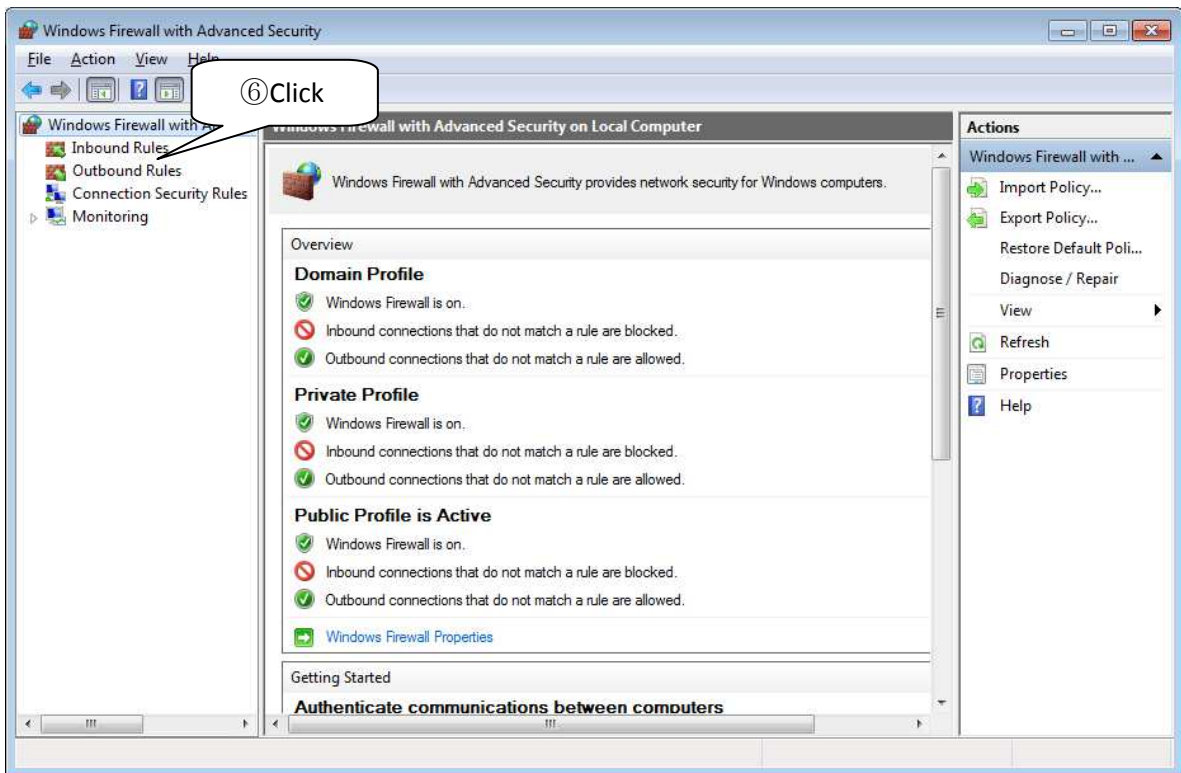
④ Click [Windows Firewall].



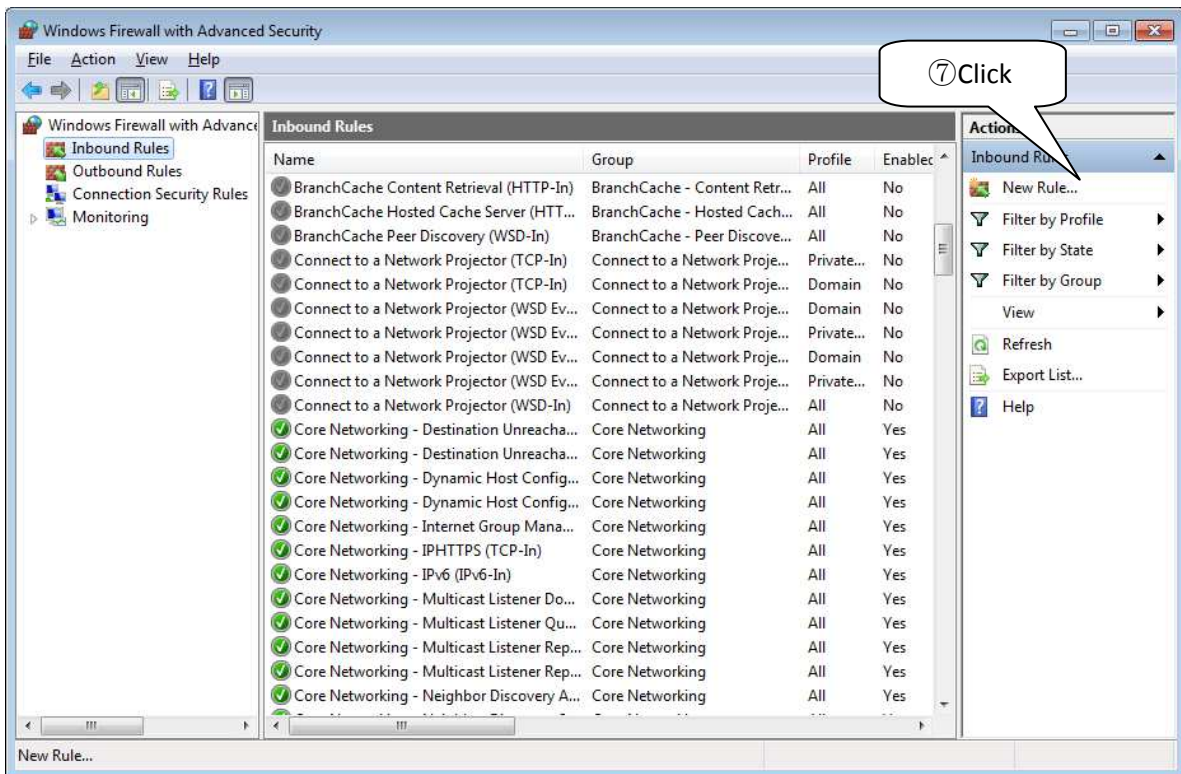
⑤ Click [Advanced settings].



⑥ Click [Inbound Rules].

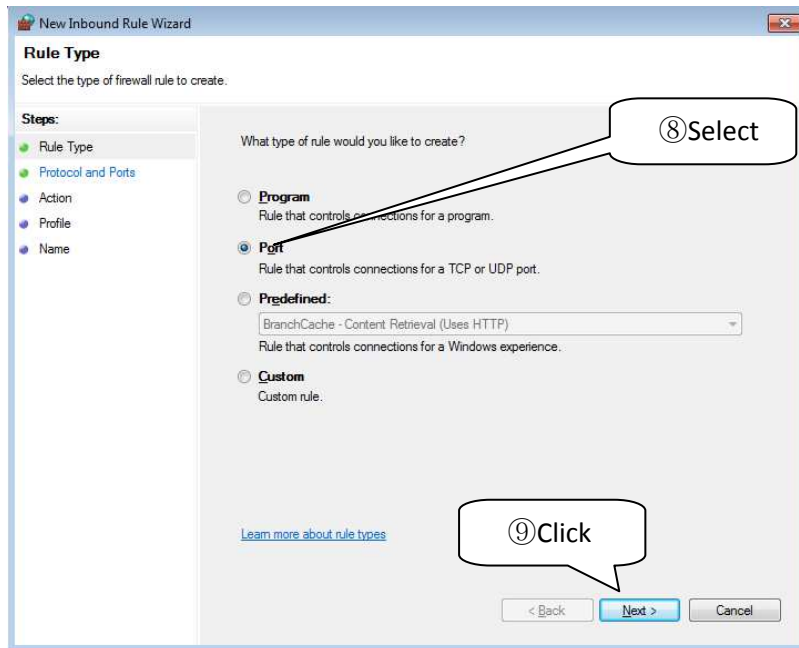


⑦ Click [New Rule].



⑧ Select [Port].

⑨ Click [Next>].

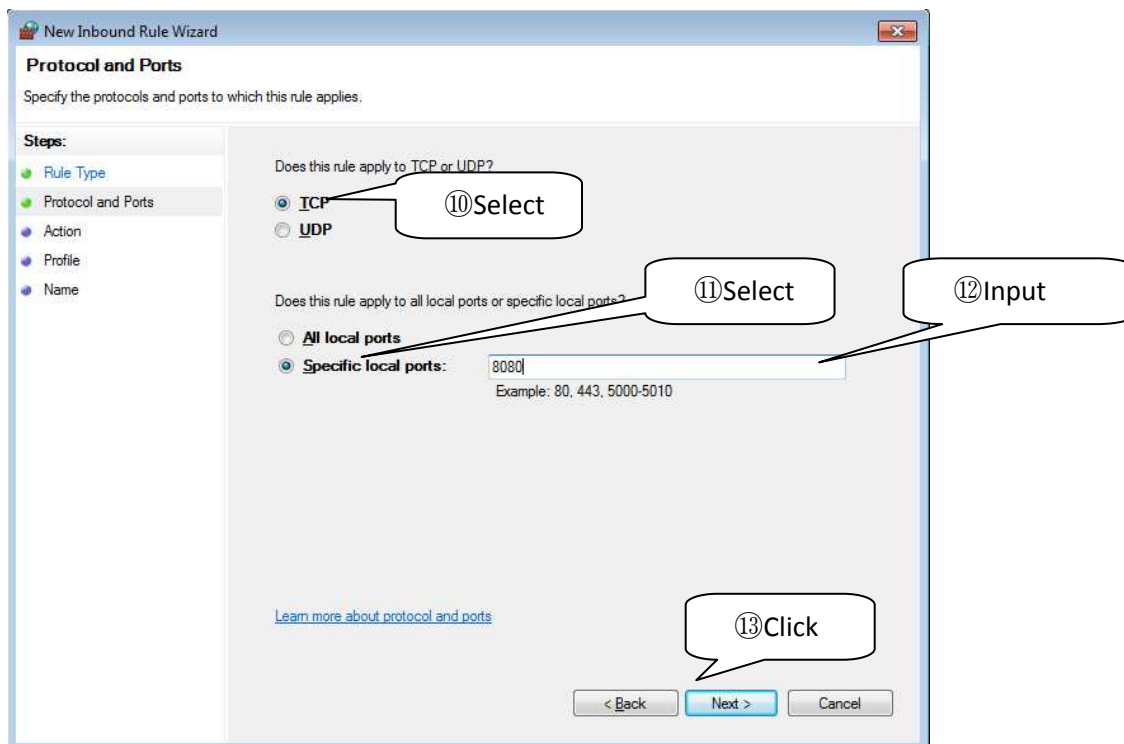


⑩ Select [TCP].

⑪ Select [Specific local port].

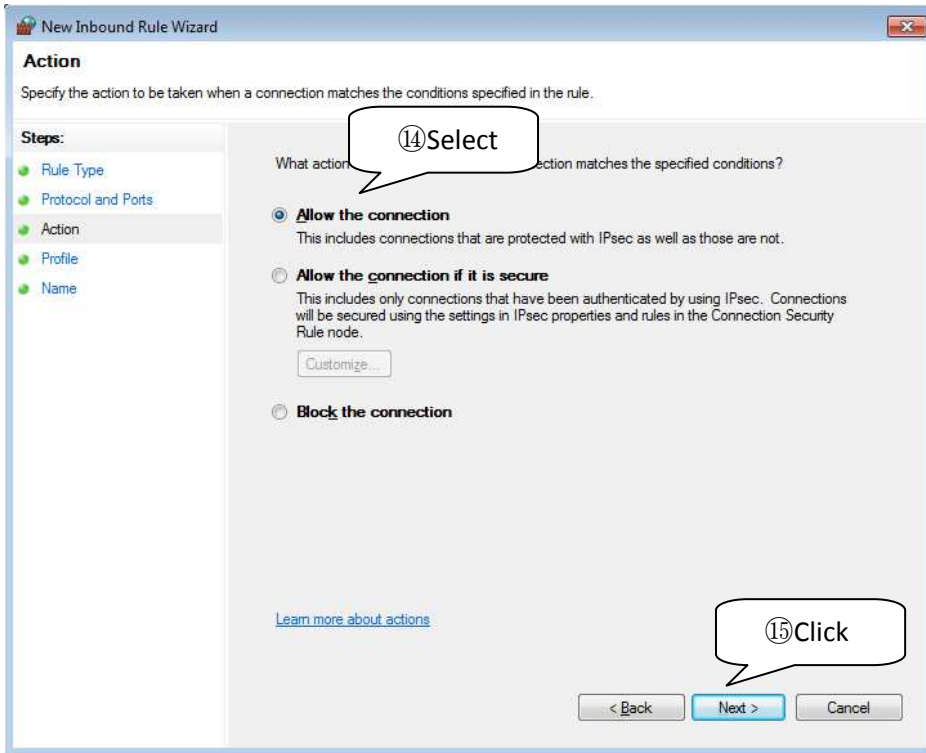
⑫ Input "WEB Using Port No." which is set by step 2-3-2.

⑬ Click [Next>].



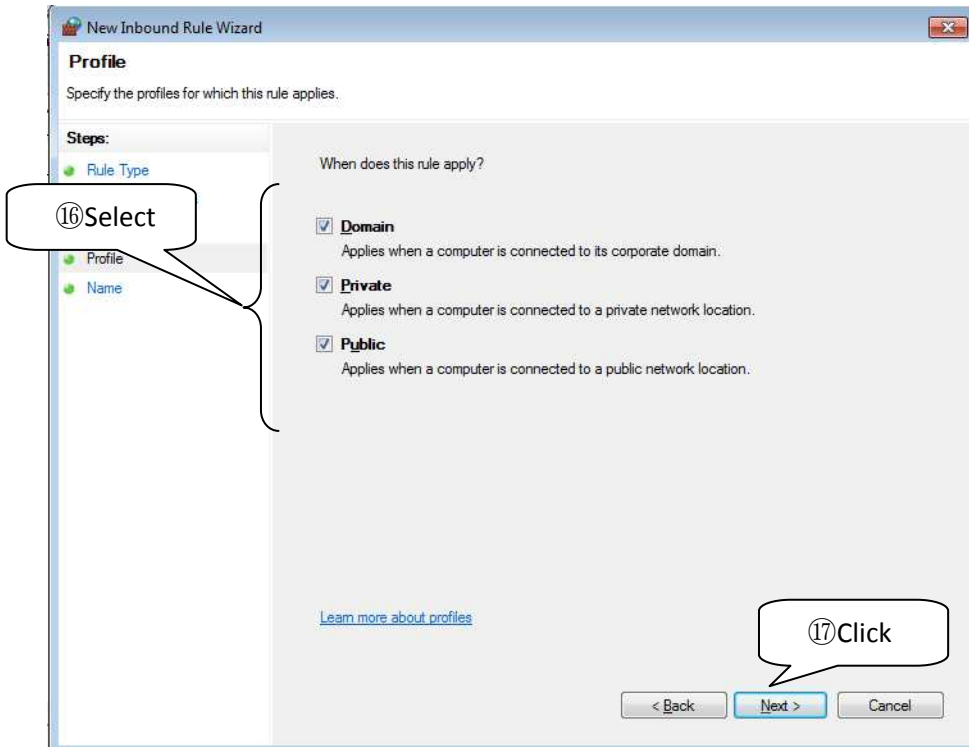
⑭ Select [Allow the connection].

⑮ Click [Next>].



⑯ Select profiles depending on your network. If you don't know about your network, select all items.

⑰ Click [Next>].



⑱ Input rule name.

⑲ Click [Finish].

The image shows a screenshot of a software wizard window titled "New Inbound Rule Wizard". The window has a standard Windows-style title bar with a close button. The main content area is titled "Name" and contains the instruction "Specify the name and description of this rule." On the left side, there is a "Steps:" list with five items: "Rule Type", "Protocol and Ports", "Action", "Profile", and "Name". The "Name" step is currently selected and highlighted. The main area contains two input fields: a "Name:" text box with the value "Class Demo Manager" and a "Description (optional):" text area which is empty. At the bottom right, there are three buttons: "< Back", "Finish", and "Cancel". The "Finish" button is highlighted in blue. Two callout boxes with speech bubble tails are present: one pointing to the "Name:" text box containing the text "⑱ Input" and another pointing to the "Finish" button containing the text "⑲ Click".

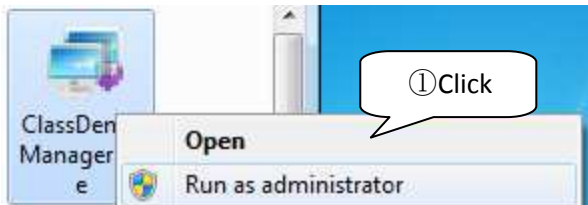
3. Class Demo Manager Function

3-1. Manager mode

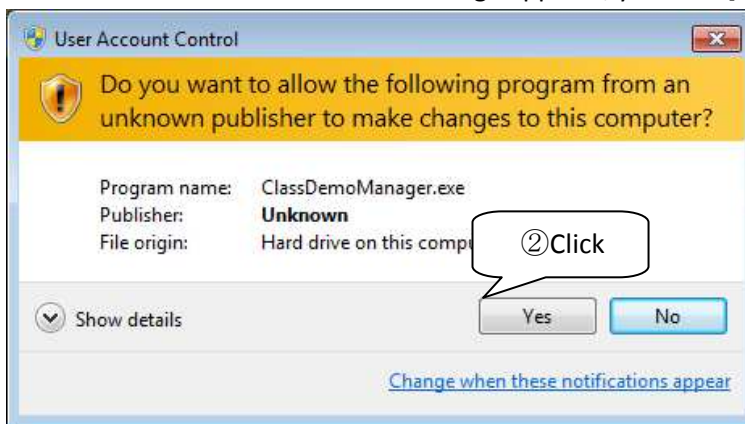
3-1-1. Start manager mode

When you open this application normally, the application start as client mode. If you want to start as manager, you should run as administrator.

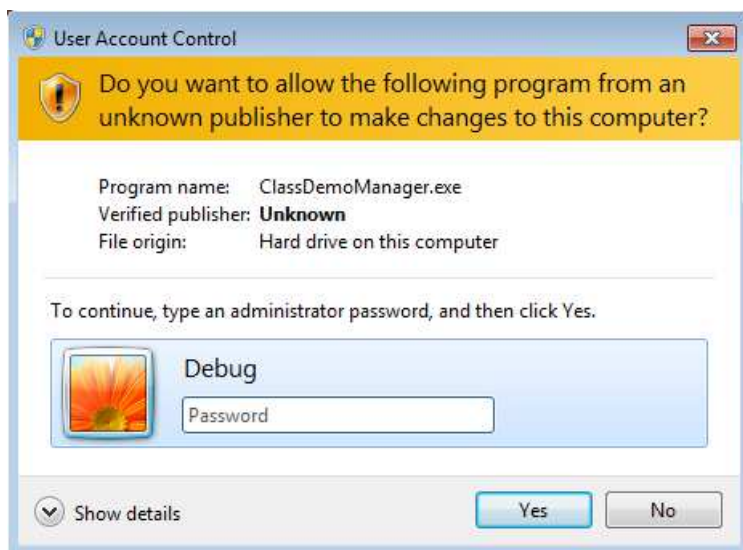
- ① Right click on the application icon then click [Run as administrator].



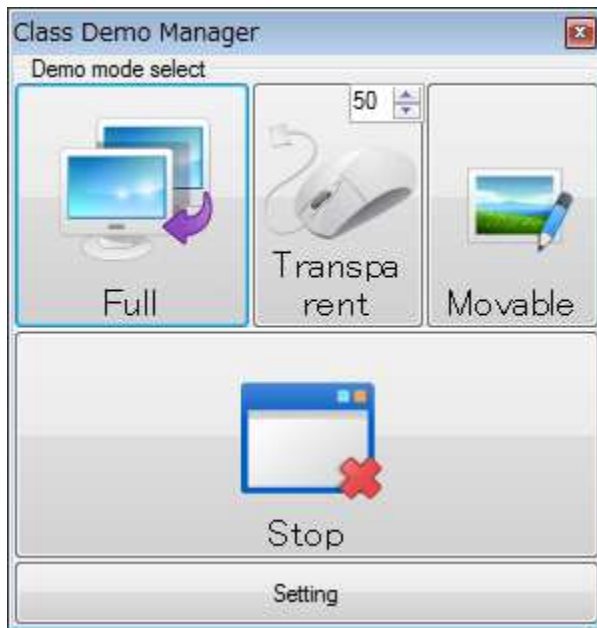
- ② When this User Account Control message appears, you click [Yes].



If you logon as non-administrative user, you should input administrator's password.



Then Manager mode starts.



These button's function is explained next chapter.

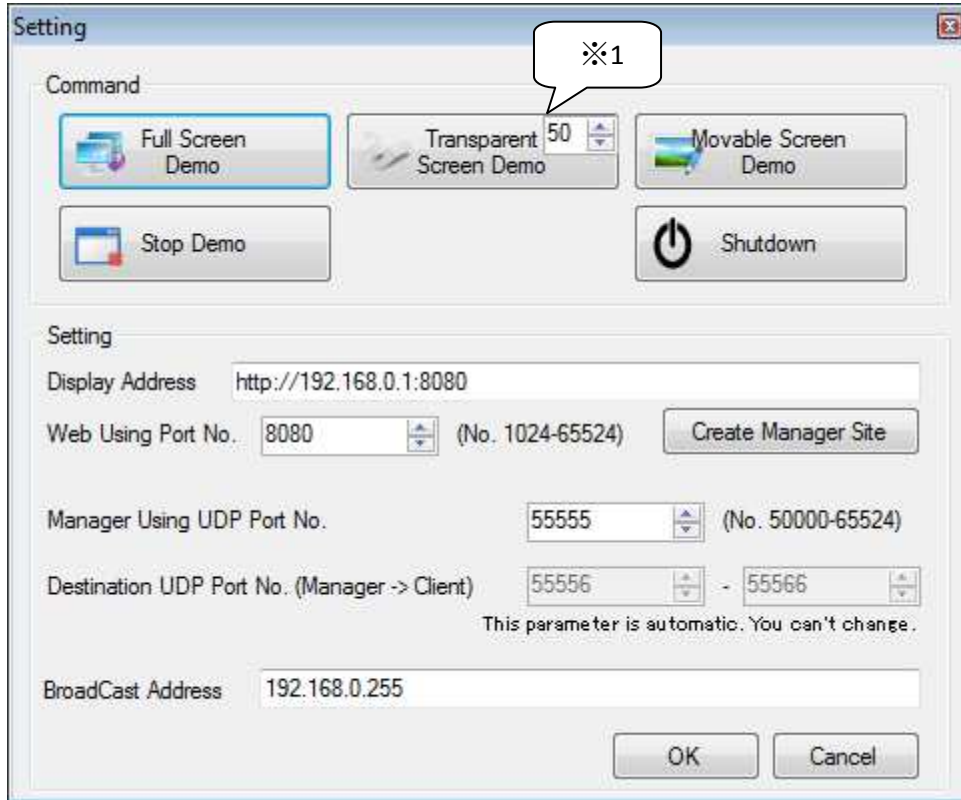
[Full] is same as [Full screen demo].

[Transparent] is same as [Transparent screen demo].

[Movable] is same as [Movable screen demo].

[Stop] is same as [Stop demo].

3-1-2. Setting information.



Command

- Full Screen Demo

When you click [Full Screen Demo], manager send command to clients. Clients' program shows manager's screen.

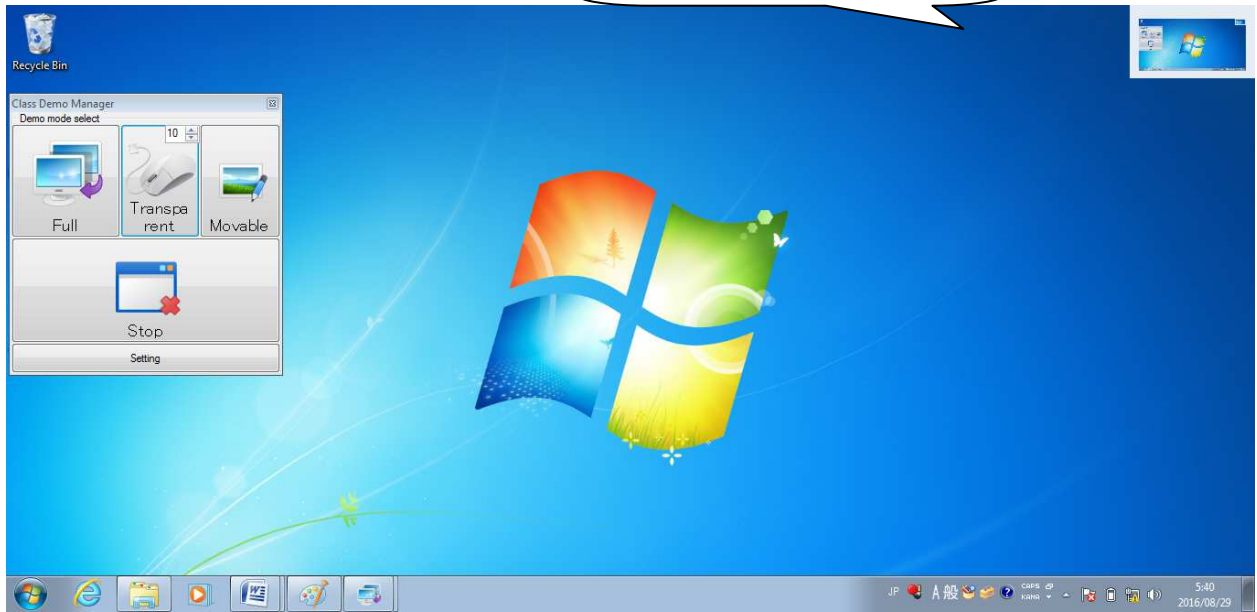
- Transparent Screen Demo

When you click [Transparent Screen Demo], manager send command to clients. Clients' program shows manager's screen on right top corner.

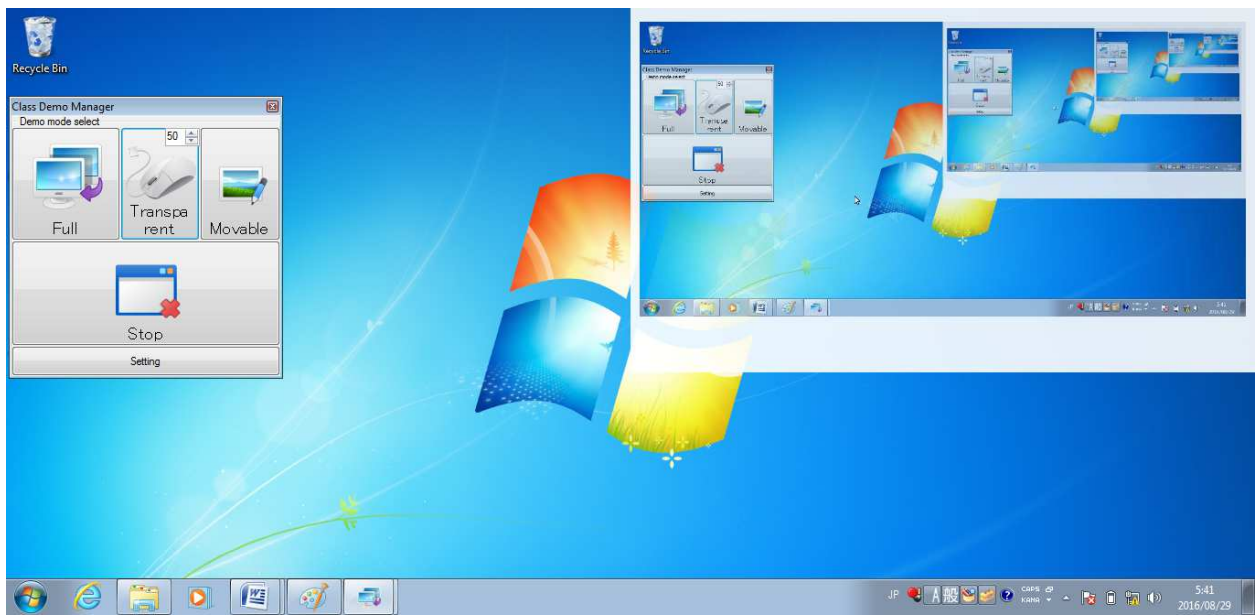
※1 This numeric control box is for screen size. The size range is 10 to 100%

Example : 10%

This is transparent screen.



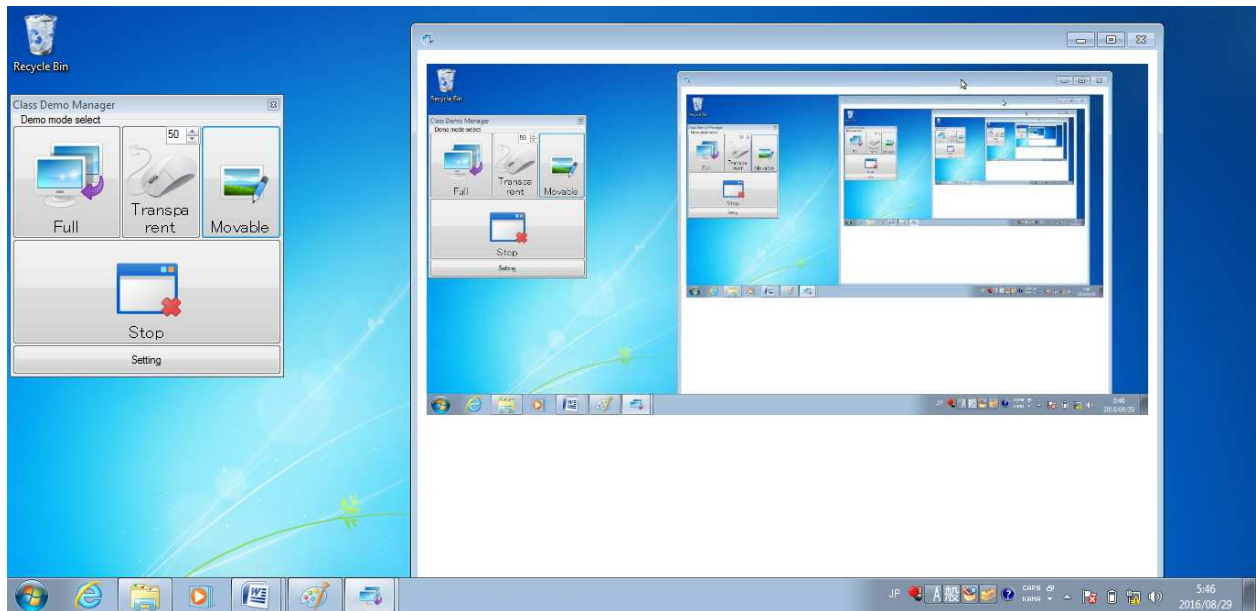
Example : 50%



(Above example screen is operated in one computer. So clients shows screen of themselves.)

- Movable Screen Demo

When you click [Movable Screen Demo], manager send command to clients. Clients' program shows manager's screen window. Clients can move, resize and hide this window behind other windows.



- Stop Demo

When you click [Stop Demo], manager send command to clients. Clients' program close demo window.

- Shutdown

When you click [Shutdown], manager send command to clients. Clients' program start to shutdown their computer. After you send this command, you cannot stop shutdown.

Setting

- Display Address

This is displaying address of clients' demo screen. You should set it as manager's machine address.

- Web Using Port No.

This is using port number for accessing.

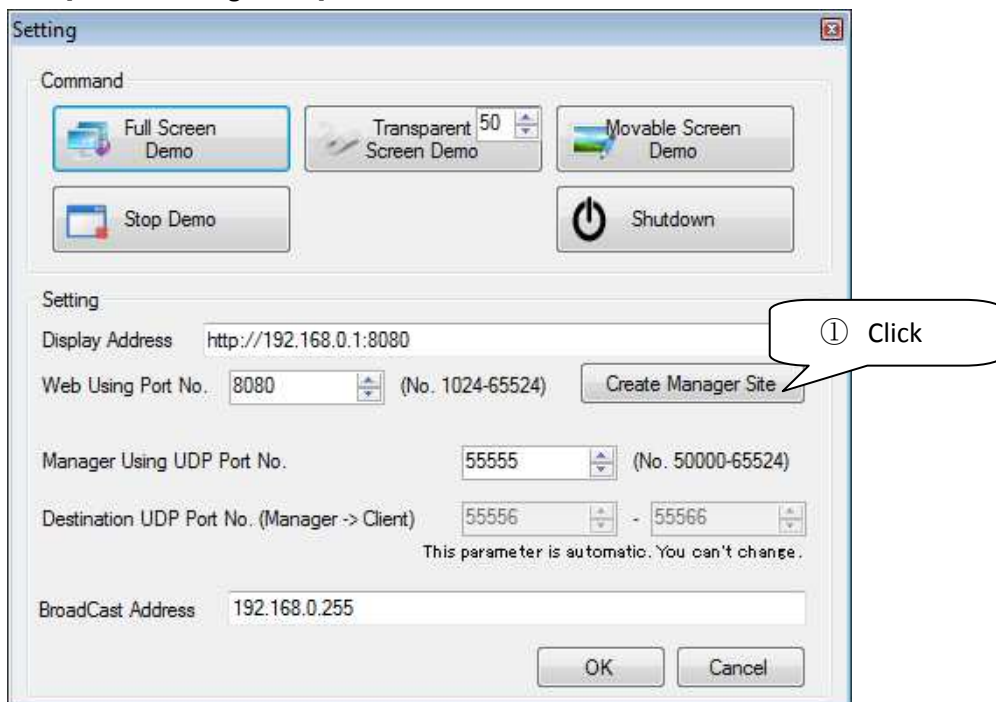
- Create Manager Site(Manager only)

After you set [Web Using Port No.].

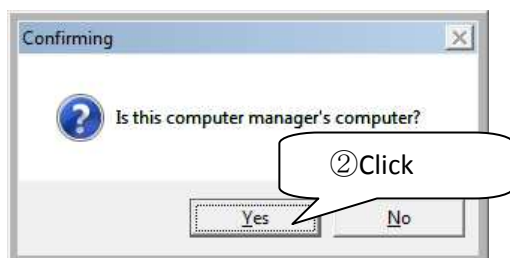
When you click this button, this program create manager site for demo.

Creating Steps

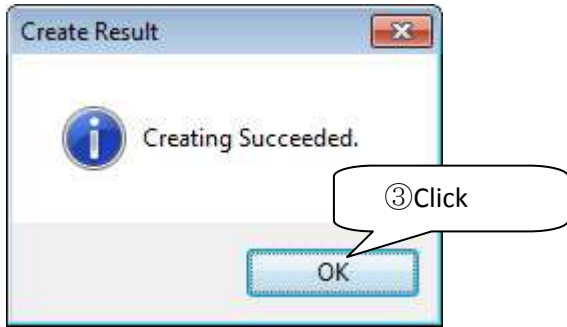
- ① Click [Create Manager Site].



- ② Click [Yes].



③ Click [OK].



If some error message shown, confirm your configuration.

- Manager Using UDP Port No , Destination UDP Port No.

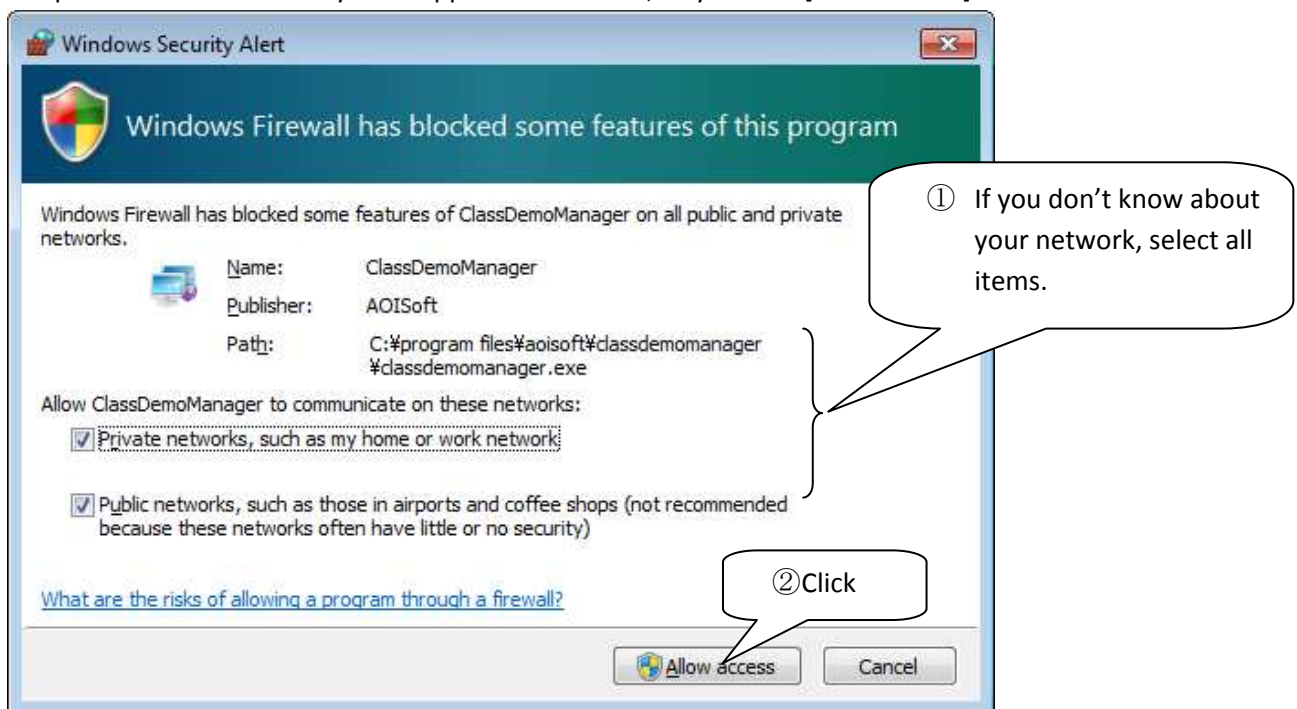
This value is not necessary to changing normally. When your computer is conflicted other program, you should change it. Destination UDP Port No. is assigned automatically after manager port.

- BroadCast Address

Manager's command destination address. It should be network broadcast address.

3-2. Client mode

If you setup "2-4 Set Task Scheduler" correctly, client mode's application will be run after restarting a computer. Windows Security Alert appears at first run, so you click [Allow access].



When manager starts demo, client mode shows manager's site. Client is refreshing screen by 1 second, so manager should move your mouse slowly while demonstrating.

3-3. ProcessCheck.exe

Installation folder have two execution files. ClassDemoManager.exe and ProcessCheck.exe.

ProcesCheck.exe is monitoring about client mode application(ClassDemoManager.exe). When client mode application stops by some reasons, ProcessCheck.exe restart client mode.

If you want to stop client mode application, you should stop ProcessCheck.exe first.